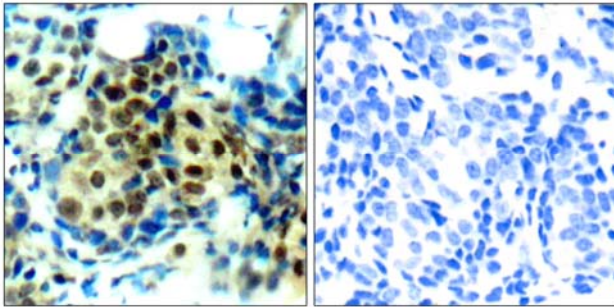




p44/42 MAP Kinase (Phospho-Thr202) Antibody Blocking Peptide

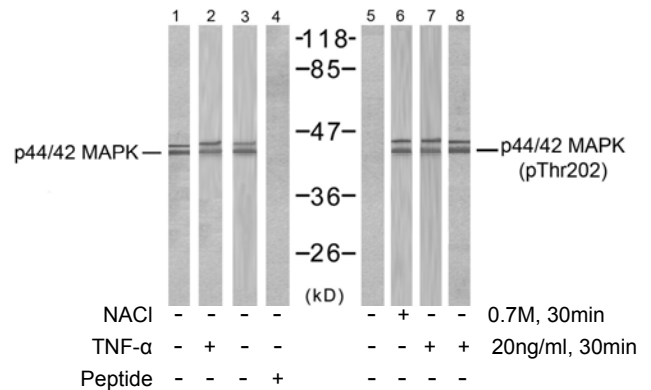
#51245

- Catalog Number:** 51245-1, 51245-2
- Amount:** 50µg/50µl, 100µg/100µl
- Form of Peptide:** Peptide in 10 mM phosphate buffered saline (without Mg²⁺ and Ca²⁺), pH 7.4, 150mM NaCl, 0.1 mM EDTA, 1 mg/ml BSA, 5% DMF and 5% glycerol.
- Peptide Information:** The synthesized phosphopeptide was derived from human p44/42 MAP Kinase around the phosphorylation site of 202 (F-L-T^P-E-Y)
- Storage:** Store at -20°C.
- Quality Control:** The quality of the peptide was evaluated by reversed-phase HPLC and mass spectrometry.
- Specificity:** The peptide specifically blocks the signal p44/42 MAP Kinase (phospho-Thr202) antibody (#11245) completely in Western blotting and IHC.
- Applications:** For Western blotting: add 10 µl of antibody and 10 µl of blocking peptide to 10 ml of antibody dilution buffer, and incubate at 4°C over night or at room temperature for 2 hours before allowing to react with the blot.
- References:** ETE HANNKEN, et al. (2000) Am Soc Nephrol 11:1387-1397
Omar D. Perez Nature et al. (2002) Biotechnology 20: 155 - 162
Jingui Yu, et al. (2005) Anesth Analg 101: 315-321
Hironobu Ihn et al. (2000) Immunology 165: 2149-2155



P-Peptide - +

Immunohistochemical analysis of paraffin-embedded human breast carcinoma tissue using p44/42 MAP Kinase (phospho-Thr202) antibody (#11245).



Western blot analysis of extracts from MCF7, 293, A431, A2780 and HeLa cells, using p44/42 MAP Kinase (Ab-202) antibody (#21237, Line 1 2 3 4) and p44/42 MAP Kinase (phospho-Thr202) antibody (#11245, Line 5 6 7 8).

For Research Use Only

For Research Use Only