

Catalog Number: 51247-1, 51247-2

Amount: 50µg/50µl, 100µg/100µl

Form of Peptide: Peptide in 10 mM phosphate buffered saline (without Mg²⁺ and Ca²⁺), pH 7.4, 150mM NaCl, 0.1 mM EDTA, 1 mg/ml BSA, 5% DMF and 5% glycerol.

Peptide Information: The synthesized phosphopeptide was derived from human HSP27 around the phosphorylation site of 78 (A-L-S^P-R-Q)

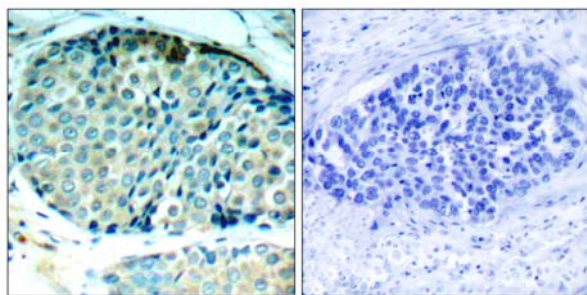
Storage: Store at -20°C.

Quality Control: The quality of the peptide was evaluated by reversed-phase HPLC and mass spectrometry.

Specificity: The peptide specifically blocks the signal HSP27 (phospho-Ser78) antibody (#11247) completely in Western blotting and IHC .

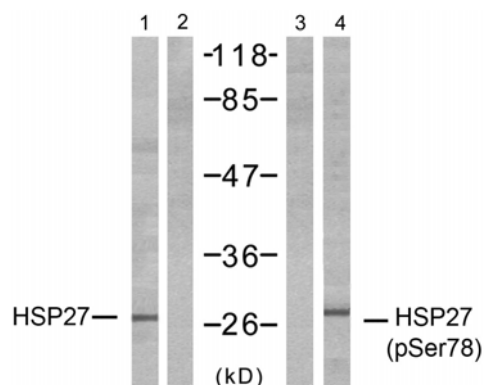
Applications: For Western blotting: add 10 µl of antibody and 10 µl of blocking peptide to 10 ml of antibody dilution buffer, and incubate at 4°C over night or at room temperature for 2 hours before allowing to react with the blot.

References: J Landry, et al. (1992) J. Biol. Chem., Vol. 267, Issue 2: 794-803
 Sita Somara, et al. (2004) Am J Physiol Cell Physiol 286: C1290-C1301
 Catherine Gaitanaki, et al. (2003) Experimental Biology 206, 2759-2769 (2003)
 Jing Dong, et al. (2004) Am J Physiol Renal Physiol 287: F1049-F1058



P-Peptide - +

Immunohistochemical analysis of paraffin-embedded human breast carcinoma tissue, using HSP27 (phospho-Ser78) antibody (#11247).



UV	+	+	-	+
Peptide	-	+	-	-

Western blot analysis of extracts from HeLa cells using HSP27 (Ab-78) antibody (#21239, Lane 1 and 2) and HSP27 (phospho-Ser78) antibody (#11247, Lane 3 and 4).

For Research Use Only