



# HSP27 (Phospho-Ser82) Antibody Blocking Peptide

#51248

**Catalog Number:** 51248-1, 51248-2

**Amount:** 50µg/50µl, 100µg/100µl

**Form of Peptide:** Peptide in 10 mM phosphate buffered saline (without Mg<sup>2+</sup> and Ca<sup>2+</sup>), pH 7.4, 150mM NaCl, 0.1 mM EDTA, 1 mg/ml BSA, 5% DMF and 5% glycerol.

**Peptide Information:** The synthesized phosphopeptide was derived from human HSP27 around the phosphorylation site of 82 (Q-L-S<sup>P</sup>-S-G)

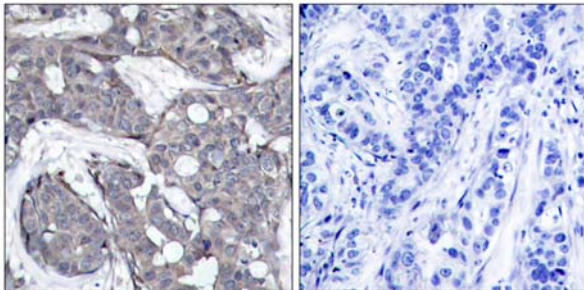
**Storage:** Store at -20°C.

**Quality Control:** The quality of the peptide was evaluated by reversed-phase HPLC and mass spectrometry.

**Specificity:** The peptide specifically blocks the signal HSP27 (phospho-Ser82) antibody (#11248) completely in Western blotting and IHC .

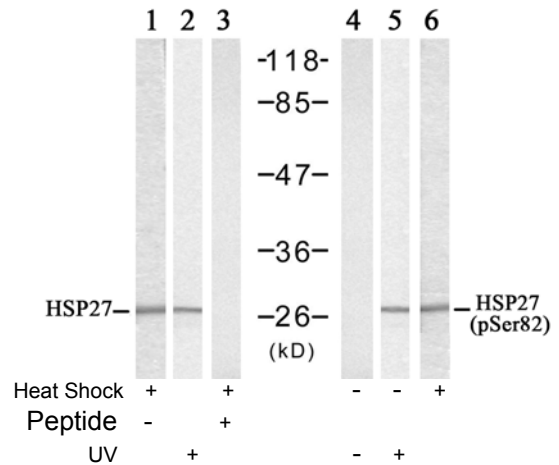
**Applications:** For Western blotting: add 10 µl of antibody and 10 µl of blocking peptide to 10 ml of antibody dilution buffer, and incubate at 4°C over night or at room temperature for 2 hours before allowing to react with the blot.

**References:** White MY, et al. (2006) J Mol Cell Cardiol. 40(6): 761-74  
 Xiankui Sun, et al. (2006) Cell Stress Chaperones. 11(1): 61–70  
 Matthias Meier; et al. (2001) Hypertension. 38:1260  
 Ali Dana, et al. (2000) Circulation Research. 86: 989



P-Peptide                      -    +

Immunohistochemical analysis of paraffin-embedded human breast carcinoma tissue using HSP27 (phospho-Ser82) antibody (#11248).



Western blot analysis of extracts from HeLa cells untreated or treated with Heat Shock or UV, using HSP27 (Ab-82) antibody (#21240, Lane 1, 2 and 3) and HSP27 (Phospho-Ser82) antibody (#11248, Lane 4, 5 and 6).