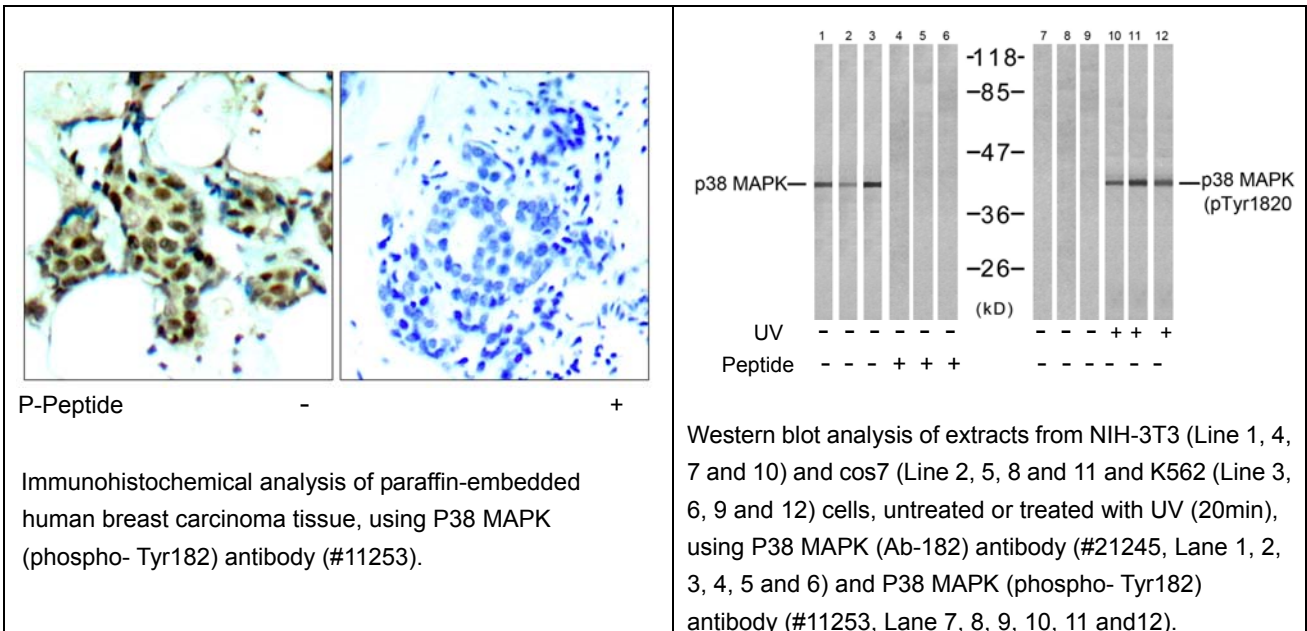




p38 MAPK (Phospho-Tyr182) Antibody Blocking Peptide

#51253

- Catalog Number:** 51253-1, 51253-2
- Amount:** 50µg/50µl, 100µg/100µl
- Form of Peptide:** Peptide in 10 mM phosphate buffered saline (without Mg²⁺ and Ca²⁺), pH 7.4, 150mM NaCl, 0.1 mM EDTA, 1 mg/ml BSA, 5% DMF and 5% glycerol.
- Peptide Information:** The synthesized phosphopeptide was derived from human p38 MAPK around the phosphorylation site of 182 (T-G-Y^P-V-A)
- Storage:** Store at -20°C.
- Quality Control:** The quality of the peptide was evaluated by reversed-phase HPLC and mass spectrometry.
- Specificity:** The peptide specifically blocks the signal p38 MAPK (phospho-Tyr182) antibody (#11253) completely in Western blotting and IHC .
- Applications:** For Western blotting: add 10 µl of antibody and 10 µl of blocking peptide to 10 ml of antibody dilution buffer, and incubate at 4°C over night or at room temperature for 2 hours before allowing to react with the blot.
- References:** Ming Zheng, et al.(2005) The FASEB Journal. 19: 109-111
 Bernt van den et al.(2001) Blink Immunology, 166: 582-587
 Arshad Rahman, et al. (2004) Am J Physiol Lung Cell Mol Physiol 287: L1017-L1024
 Osamu Yoshino, et al. (2003) Endocrinology & Metabolism Vol. 88: 2236-2241



For Research Use Only

For Research Use Only