



## p70 S6 Kinase (Phospho-Thr421) Antibody Blocking Peptide

#51254

**Catalog Number:** 51254-1, 51254-2

**Amount:** 50µg/50µl, 100µg/100µl

**Form of Peptide:** Peptide in 10 mM phosphate buffered saline (without Mg<sup>2+</sup> and Ca<sup>2+</sup>), pH 7.4, 150mM NaCl, 0.1 mM EDTA, 1 mg/ml BSA, 5% DMF and 5% glycerol.

**Peptide Information:** The synthesized phosphopeptide was derived from human p70 S6 Kinase around the phosphorylation site of 421 (P-R-T<sup>P</sup>-P-V).

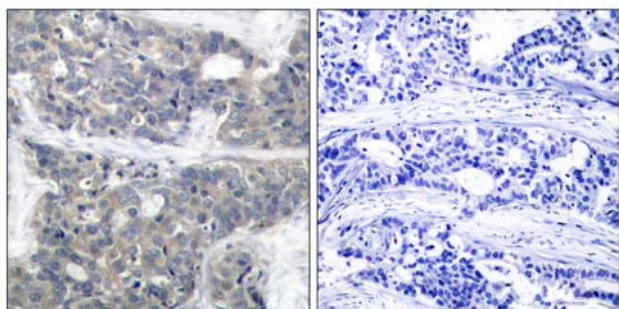
**Storage:** Store at -20°C.

**Quality Control:** The quality of the peptide was evaluated by reversed-phase HPLC and mass spectrometry.

**Specificity:** The peptide specifically blocks the signal p70 S6 Kinase (phospho-Ser421) antibody (#11254) completely in Western blotting and IHC.

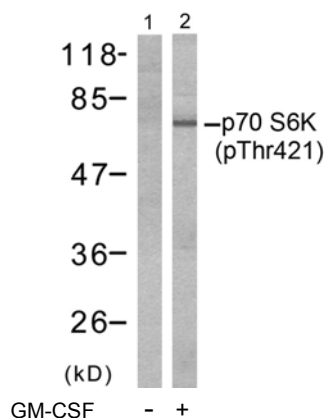
**Applications:** For Western blotting: add 10 µl of antibody and 10 µl of blocking peptide to 10 ml of antibody dilution buffer, and incubate at 4°C over night or at room temperature for 2 hours before allowing to react with the blot.

**References:** Xiao-Feng, et al. (2003) Le1 30 Volume 22: 484-497  
An WL, et al. (2003) Am J Pathol. 163(2): 591-607.  
Le XF, et al. (2003) Oncogene.22(4): 484-97



P-Peptide - +

Immunohistochemical analysis of paraffin-embedded human breast carcinoma tissue using p70 S6 Kinase (phospho-Thr421) antibody (#11254).



Western blot analysis of extracts from Jurkat cells, untreated or treated with GM-CSF (25ng/ml 30min) using p70 S6 Kinase (phospho-Thr421) antibody (#11254, Line 1 and 2).

**For Research Use Only**

**For Research Use Only**