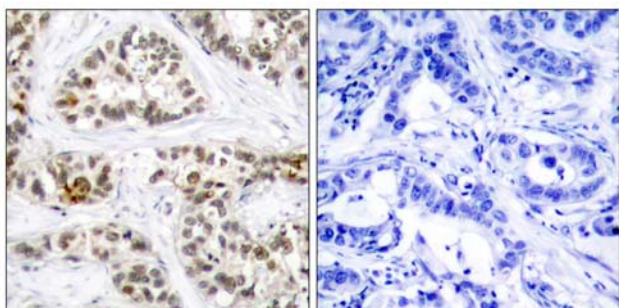




## RelB (Phospho-Ser573) Antibody Blocking Peptide

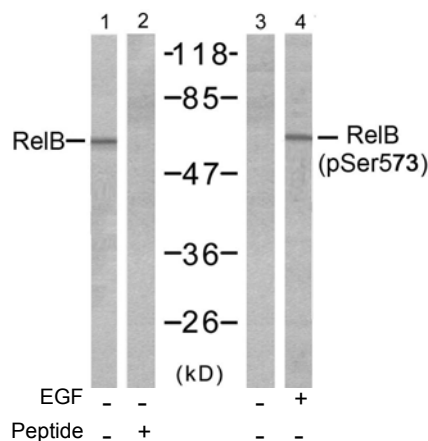
#51255

- Catalog Number:** 51255-1, 51255-2
- Amount:** 50µg/50µl, 100µg/100µl
- Form of Peptide:** Peptide in 10 mM phosphate buffered saline (without Mg<sup>2+</sup> and Ca<sup>2+</sup>), pH 7.4, 150mM NaCl, 0.1 mM EDTA, 1 mg/ml BSA, 5% DMF and 5% glycerol.
- Peptide Information:** The synthesized phosphopeptide was derived from human RelB around the phosphorylation site of 573 (L-L-S<sup>P</sup>-P-G)
- Storage:** Store at -20°C.
- Quality Control:** The quality of the peptide was evaluated by reversed-phase HPLC and mass spectrometry.
- Specificity:** The peptide specifically blocks the signal RelB (phospho-Ser573) antibody (#11255) completely in Western blotting and IHC.
- Applications:** For Western blotting: add 10 µl of antibody and 10 µl of blocking peptide to 10 ml of antibody dilution buffer, and incubate at 4°C over night or at room temperature for 2 hours before allowing to react with the blot.
- References:** Marienfeld R, et al. (2001) *Oncogene*. 20 (56): 8142-7.  
Charlotte S. Kaetzel1, et al. (2005) *Immunological Reviews* Volume 206: 83  
Elwira Pyz, et al. (2006) *J Immunol*. 176:7447-55



P-Peptide                      -                      +

Immunohistochemical analysis of paraffin-embedded human breast carcinoma tissue using RelB (phospho-Ser573) antibody (#11255).



Western blot analysis of extracts from A431 cells, untreated or treated with EGF (200ng/ml 10min), using RelB (Ab-573) antibody (#21247, Line 1 and 2) and RelB (phospho-Ser573) antibody (#11255, Line 3 and 4).

**For Research Use Only**