



Connexin43 (Phospho-Ser367) Antibody Blocking Peptide

#51258

Catalog Number: 51258-1, 51258-2

Amount: 50µg/50µl, 100µg/100µl

Form of Peptide: Peptide in 10 mM phosphate buffered saline (without Mg²⁺ and Ca²⁺), pH 7.4, 150mM NaCl, 0.1 mM EDTA, 1 mg/ml BSA, 5% DMF and 5% glycerol.

Peptide Information: The synthesized phosphopeptide was derived from human Connexin43 around the phosphorylation site of 367 (R-A-S^P-S-R).

Storage: Store at -20°C.

Quality Control: The quality of the peptide was evaluated by reversed-phase HPLC and mass spectrometry.

Specificity: The peptide specifically blocks the signal Connexin43 (phospho-Ser367) antibody (#11258) completely in Western blotting and IHC .

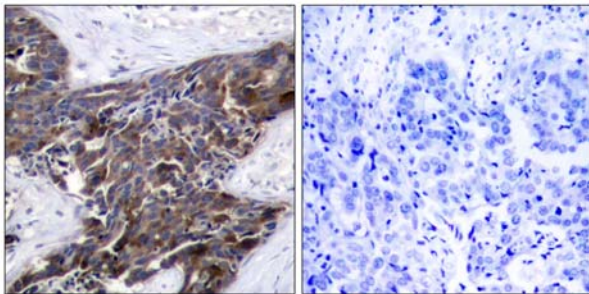
Applications: For Western blotting: add 10 µl of antibody and 10 µl of blocking peptide to 10 ml of antibody dilution buffer, and incubate at 4°C over night or at room temperature for 2 hours before allowing to react with the blot.

References: Joell L. Solan¹, et al. (2003) Cell Science 116: 2203-2211

Satoshi Matsushita, et al. (2006) Histochemistry and Cytochemistry 54 (3): 343-353,

Xiaoyong Bao, et al. (2004) Cell Physiol 286: C647-C654

W. E. I. Li, et al. (1998) European Journal of Neuroscience 10: 2444

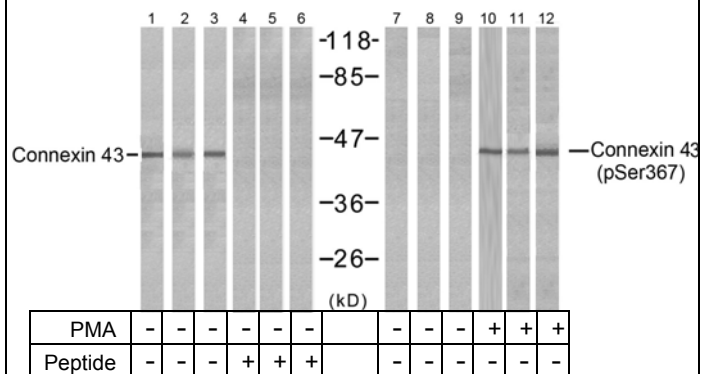


P-Peptide

-

+

Immunohistochemical analysis of paraffin-embedded human breast carcinoma tissue using Connexin43 (phospho-Ser367) antibody (#11258).



Western blot analysis of extracts from HeLa (Line 1, 4, 7 and 10), K562 (Line 2, 5, 8 and 11) and 293 (Line 3, 6, 9 and 12) cells, untreated or treated with PMA (1µM 30min), using Connexin43 (Ab-367) antibody (#21250, Lane 1, 2, 3, 4, 5 and 6) and Connexin43 (phospho-Ser367) antibody (#11258, Lane 7, 8, 9, 10, 11 and 12).

For Research Use Only