



## GluR1(phospho-Ser849) Antibody Blocking Peptide

#51261

**Catalog Number:** 51261-1, 51261-2

**Amount:** 50µg/50µl, 100µg/100µl

**Form of Peptide:** Peptide in 10 mM phosphate buffered saline (without Mg<sup>2+</sup> and Ca<sup>2+</sup>), pH 7.4, 150mM NaCl, 0.1 mM EDTA, 1 mg/ml BSA, 5% DMF and 5% glycerol.

**Peptide Information:** The synthesized phosphopeptide was derived from human GluR1 around the phosphorylation site of 849 ( Q-Q-S<sup>P</sup>-I-N ).

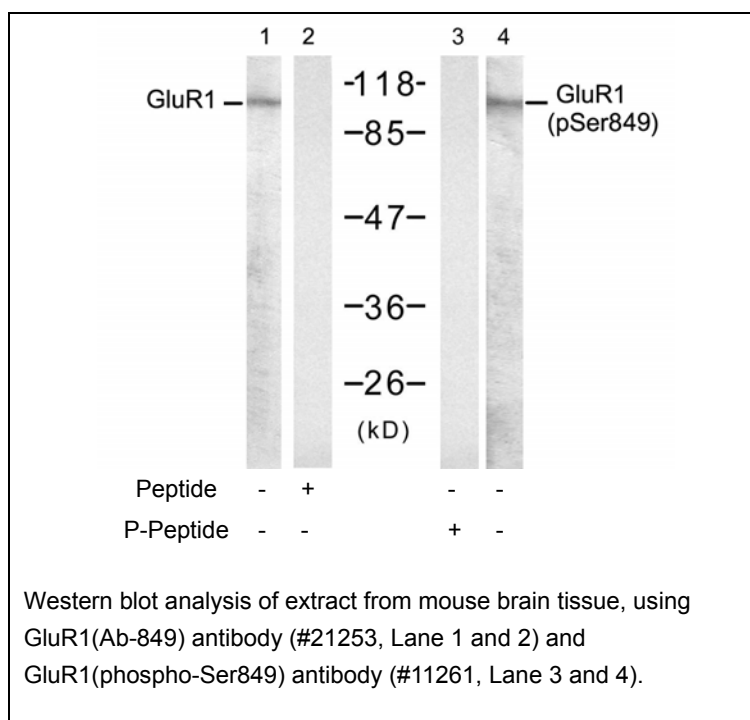
**Storage:** Store at -20°C.

**Quality Control:** The quality of the peptide was evaluated by reversed-phase HPLC and mass spectrometry.

**Specificity:** The peptide specifically blocks the signal GluR1(phospho-Ser849) Antibody (#11261) completely in Western blotting .

**Applications:** For Western blotting:add 10 µl of antibody and 10 µl of blocking peptide to 10 ml of antibody dilution buffer, and incubate at 4°C over night or at room temperature for 2 hours before allowing to react with the blot.

**References:** Emamian ES, et al. (2004) J Neurosci. 24(7): 1561-4  
Palmer, C.L. et al. (2005) Pharmacol. Rev. 57, 253-277.



**For Research Use Only**