



HSF1 (Phospho-Ser303) Antibody Blocking Peptide

#51263

Catalog Number: 51263-1, 51263-2

Amount: 50µg/50µl, 100µg/100µl

Form of Peptide: Peptide in 10 mM phosphate buffered saline (without Mg²⁺ and Ca²⁺), pH 7.4, 150mM NaCl, 0.1 mM EDTA, 1 mg/ml BSA, 5% DMF and 5% glycerol.

Peptide Information: The synthesized phosphopeptide was derived from human HSF1 around the phosphorylation site of 303 (P-P-S^P-P-P).

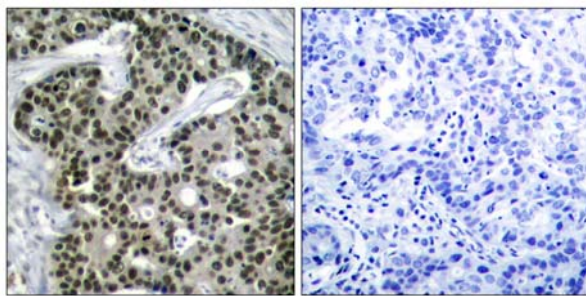
Storage: Store at -20°C.

Quality Control: The quality of the peptide was evaluated by reversed-phase HPLC and mass spectrometry.

Specificity: The peptide specifically blocks the signal HSF1 (phospho-Ser303) antibody (#11263) completely in Western blotting and IHC.

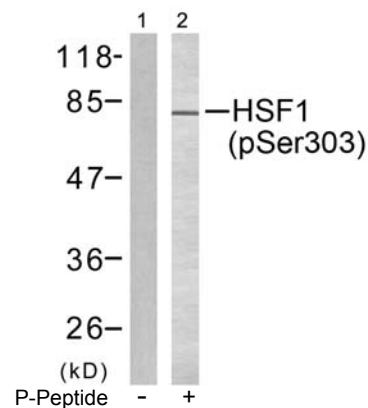
Applications: For Western blotting: add 10 µl of antibody and 10 µl of blocking peptide to 10 ml of antibody dilution buffer, and incubate at 4°C over night or at room temperature for 2 hours before allowing to react with the blot.

References: Parvaneh Rafiee, et.al. (2006) Am J Physiol Cell Physiol ; 291: C931 - C945
Fumika Shinozaki, et.al. (2006) J. Biol. Chem ; 281: 16361 - 16369.
Eiichi Takaki, et.al. (2006) J. Biol. Chem ; 281: 4931 - 4937.
Jan-Jong Hung, et.al. (1998) J. Biol. Chem ; 273: 31924.



P-Peptide - +

Immunohistochemical analysis of paraffin-embedded human breast carcinoma tissue using HSF1 (phospho-Ser303) antibody (#11263).



Western blot analysis of extracts from MCF7 cells, using HSF1 (phospho-Ser303) antibody (#11263).

For Research Use Only