



EGFR (Phospho-Tyr1110)Antibody Blocking Peptide

#51264

Catalog Number: 51264-1, 51264-2

Amount: 50µg/50µl, 100µg/100µl

Form of Peptide: Peptide in 10 mM phosphate buffered saline (without Mg²⁺ and Ca²⁺), pH 7.4, 150mM NaCl, 0.1 mM EDTA, 1 mg/ml BSA, 5% DMF and 5% glycerol.

Peptide Information: The synthesized phosphopeptide was derived from human EGFR around the phosphorylation site of 1110 (P-V-Y^P-H-N)

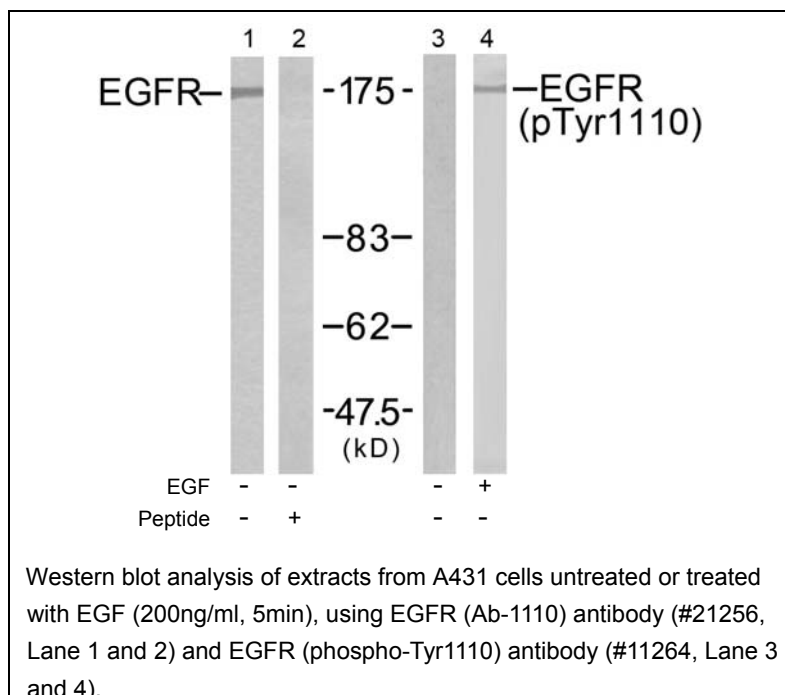
Storage: Store at -20°C.

Quality Control: The quality of the peptide was evaluated by reversed-phase HPLC and mass spectrometry.

Specificity: The peptide specifically blocks the signal EGFR (phospho-Tyr1110) antibody (#11264) completely in Western blotting .

Applications: For Western blotting: add 10 µl of antibody and 10 µl of blocking peptide to 10 ml of antibody dilution buffer, and incubate at 4°C over night or at room temperature for 2 hours before allowing to react with the blot.

References: Kaisa Erjala, et.al. (2006) Clin. Cancer Res Jul 2006; 12: 4103 - 4111.
Judit Anido, et.al. (2003) Clin. Cancer Res ; 9: 1274.
Julian Andreev, et.al. (2001) J. Biol. Chem ; 276: 20130 - 20135.
Suil Kim, et.al. (2002) Am J Physiol Lung Cell Mol Physiol ; 283: 67.



For Research Use Only