



synapsin (Phospho-Ser9) Antibody Blocking Peptide

#51267

Catalog Number: 51267-1, 51267-2

Amount: 50µg/50µl, 100µg/100µl

Form of Peptide: Peptide in 10 mM phosphate buffered saline (without Mg²⁺ and Ca²⁺), pH 7.4, 150mM NaCl, 0.1 mM EDTA, 1 mg/ml BSA, 5% DMF and 5% glycerol.

Peptide Information: The synthesized phosphopeptide was derived from human synapsin around the phosphorylation site of 9 (R-L-S^P-D-S).

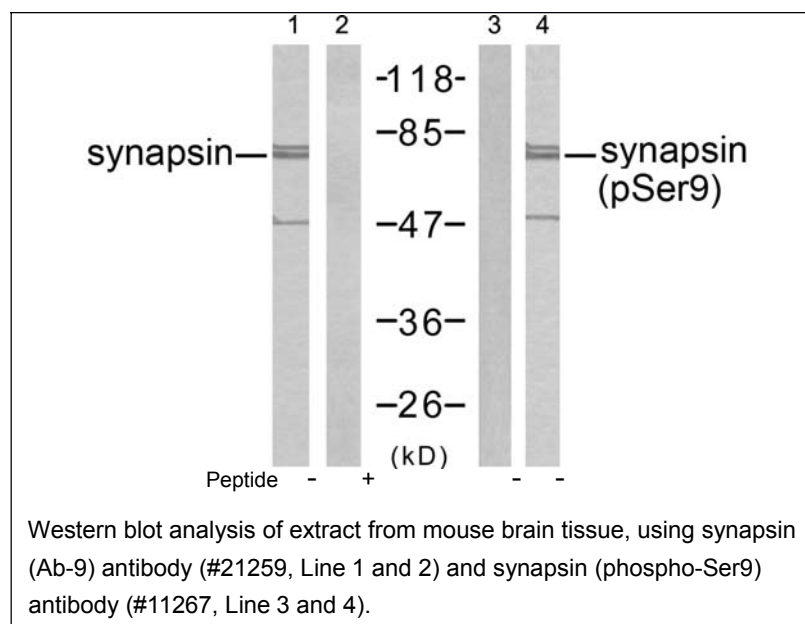
Storage: Store at -20°C.

Quality Control: The quality of the peptide was evaluated by reversed-phase HPLC and mass spectrometry.

Specificity: The peptide specifically blocks the signal of synapsin (phospho-Ser9) antibody (#11267) completely in Western blotting.

Applications: For Western blotting: add 10 µl of antibody and 10 µl of blocking peptide to 10 ml of antibody dilution buffer, and incubate at 4°C over night or at room temperature for 2 hours before allowing to react with the blot.

References: Diviya Sinha, et.al. (2005) Am J Physiol Renal Physiol ; 288: F703 - F713.
Franco Onofri, et.al. (2000) J. Biol. Chem ; 275: 29857.
Dario Bonanomi, et.al. (2005) J. Neurosci; 25: 7299 - 7308.
Hiroshi Tokumitsu, et.al. (2005) J. Biol. Chem ; 280: 35108 - 35118.



For Research Use Only