



## p70 S6 Kinase (Phospho-Ser411) Antibody Blocking Peptide

#51269

**Catalog Number:** 51269-1, 51269-2

**Amount:** 50µg/50µl, 100µg/100µl

**Form of Peptide:** Peptide in 10 mM phosphate buffered saline (without Mg<sup>2+</sup> and Ca<sup>2+</sup>), pH 7.4, 150mM NaCl, 0.1 mM EDTA, 1 mg/ml BSA, 5% DMF and 5% glycerol.

**Peptide Information:** The synthesized phosphopeptide was derived from human p70 S6 Kinase around the phosphorylation site of 411 (I-R-S<sup>P</sup>-P-R).

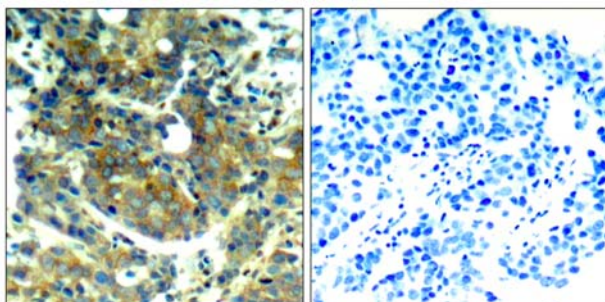
**Storage:** Store at -20°C.

**Quality Control:** The quality of the peptide was evaluated by reversed-phase HPLC and mass spectrometry.

**Specificity:** The peptide specifically blocks the signal p70 S6 Kinase (phospho-Ser411) antibody (#11269) completely in Western blotting and IHC.

**Applications:** For Western blotting: add 10 µl of antibody and 10 µl of blocking peptide to 10 ml of antibody dilution buffer, and incubate at 4°C over night or at room temperature for 2 hours before allowing to react with the blot.

**References:** Satoru Eguchi et al. (1999) J Biol Chem, Vol. 274: 36843-36851  
Papst PJ, et al. (1998) J Biol Chem. 273(24):15077-84.  
Ulrike Krause et al. (2002) Eur. J. Biochem. 269: 3751-3759 c  
Le, X.F, et al. (2003) Oncogene 22: 484-97

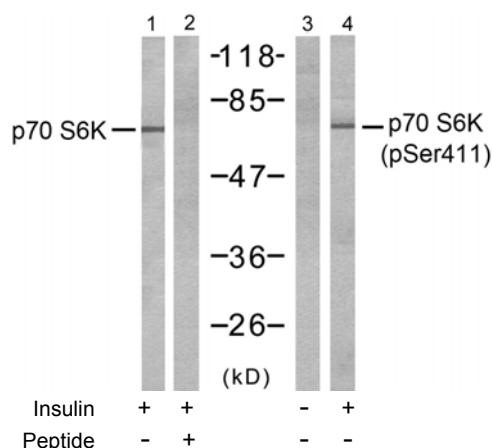


P-Peptide

-

+

Immunohistochemical analysis of paraffin-embedded human breast carcinoma tissue, using p70 S6 Kinase (phospho-Ser411) antibody (#11269).



Western blot analysis of extracts from 293 cells, untreated or treated with insulin (10µ/ml, 15min), using p70 S6 Kinase (Ab-411) antibody (#21261, Lane 1 and 2) and p70 S6 Kinase (phospho-Ser411) antibody (#11269, Lane 3 and 4).

**For Research Use Only**