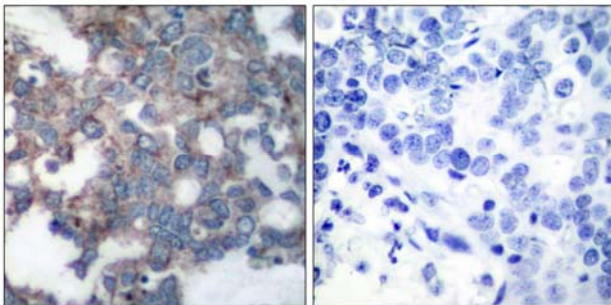




p70 S6 Kinase (Phospho-Ser424) Antibody Blocking Peptide

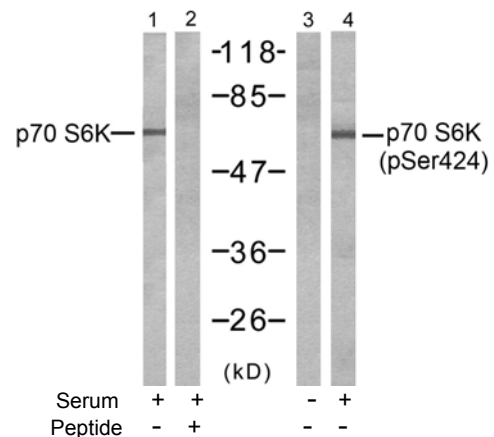
#51284

- Catalog Number:** 51284
- Amount:** 100µg/100µl
- Form of Peptide:** Peptide in 10 mM phosphate buffered saline (without Mg²⁺ and Ca²⁺), pH 7.4, 150mM NaCl, 0.1 mM EDTA, 1 mg/ml BSA, 5% DMF and 5% glycerol.
- Peptide Information:** The synthesized phosphopeptide was derived from human p70 S6 Kinase around the phosphorylation site of serine 424 (P-V-S^P-P-V).
- Storage:** Store at -20°C.
- Quality Control:** The quality of the peptide was evaluated by reversed-phase HPLC and mass spectrometry.
- Specificity:** The peptide specifically blocks the signal of p70 S6 Kinase (phospho-Ser424) antibody (#11284) completely in Western blotting and IHC.
- Applications:** For Western blotting: add 10 µl of antibody and 10 µl of blocking peptide to 10 ml of antibody dilution buffer, and incubate at 4°C over night or at room temperature for 2 hours before allowing to react with the blot.
- References:** Satoru Eguchi et al. (1999) J Biol Chem, Vol. 274: 36843-36851
Papst PJ, et al. (1998) J Biol Chem. 273(24):15077-84.
Ulrike Krause et al. (2002) Eur. J. Biochem. 269: 3751-3759 c
Le, X.F, et al. (2003) Oncogene 22: 484-97.



P-Peptide - +

Immunohistochemical analysis of paraffin-embedded human breast carcinoma tissue using p70 S6 Kinase (phospho-Ser424) antibody (#11284).



Western blot analysis of extracts from 293 cells, untreated or treated with serum (10min), using p70 S6 Kinase (Ab-424) antibody (#21276, Line 1 and 2) and p70 S6 Kinase (phospho-Ser424) antibody (#11284, Line 3 and 4).

For Research Use Only