



## PKC $\delta$ (Phospho-Ser645) Antibody Blocking Peptide

#51296

**Catalog Number:** 51296

**Amount:** 100 $\mu$ g/100 $\mu$ l

**Form of Peptide:** Peptide in 10 mM phosphate buffered saline (without Mg<sup>2+</sup> and Ca<sup>2+</sup>), pH 7.4, 150mM NaCl, 0.1 mM EDTA, 1 mg/ml BSA, 5% DMF and 5% glycerol.

**Peptide Information:** The synthesized phosphopeptide was derived from human PKC $\delta$  around the phosphorylation site of serine 645 (R-L-S<sup>P</sup>-Y-S).

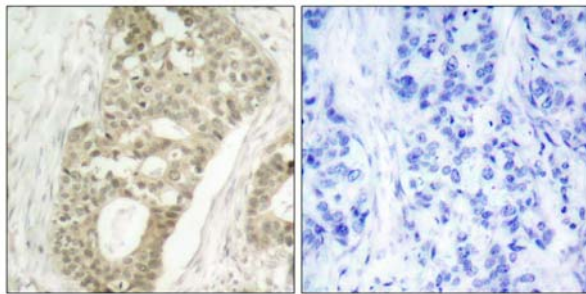
**Storage:** Store at -20 $^{\circ}$ C.

**Quality Control:** The quality of the peptide was evaluated by reversed-phase HPLC and mass spectrometry.

**Specificity:** The peptide specifically blocks the signal of PKC $\delta$  (phospho-Ser645) antibody (#11296) completely in Western blotting and IHC.

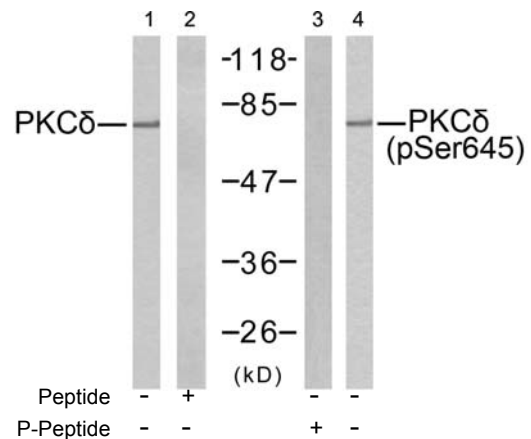
**Applications:** For Western blotting: add 10  $\mu$ l of antibody and 10  $\mu$ l of blocking peptide to 10 ml of antibody dilution buffer, and incubate at 4 $^{\circ}$ C over night or at room temperature for 2 hours before allowing to react with the blot.

**References:** Kei Sakamoto, et.al. (2003) Am J Physiol Endocrinol Metab ; 285: E1081 - E1088.  
Ling Zhang, et.al. (2004) J. Biol. Chem ; 279: 28315 - 28319.  
Kristof Van Kolen et.al. (2006) FEBS J ; 273: 1843 - 1854.  
Martin Villalba, et.al. (2002) J. Cell Biol ; 157: 253.



P-Peptide                      -    +

Immunohistochemical analysis of paraffin-embedded human breast carcinoma tissue using PKC $\delta$  (phospho-Ser645) antibody (#11296).



Western blot analysis of extracts from MCF7 cells using PKC $\delta$  (Ab-645) antibody (#21288, Line 1 and 2) and PKC $\delta$  (phospho-Ser645) antibody (#11296, Line 3 and 4).

**For Research Use Only**