



PKC θ (Phospho-Ser676) Antibody Blocking Peptide

#51297

Catalog Number: 51297

Amount: 100 μ g/100 μ l

Form of Peptide: Peptide in 10 mM phosphate buffered saline (without Mg²⁺ and Ca²⁺), pH 7.4, 150mM NaCl, 0.1 mM EDTA, 1 mg/ml BSA, 5% DMF and 5% glycerol.

Peptide Information: The synthesized phosphopeptide was derived from human PKC θ around the phosphorylation site of serine 676 (R-L-S^P-F-A).

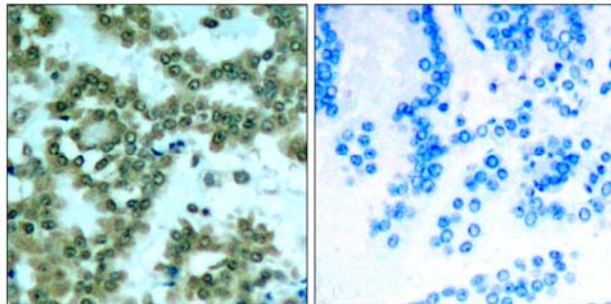
Storage: Store at -20 $^{\circ}$ C.

Quality Control: The quality of the peptide was evaluated by reversed-phase HPLC and mass spectrometry.

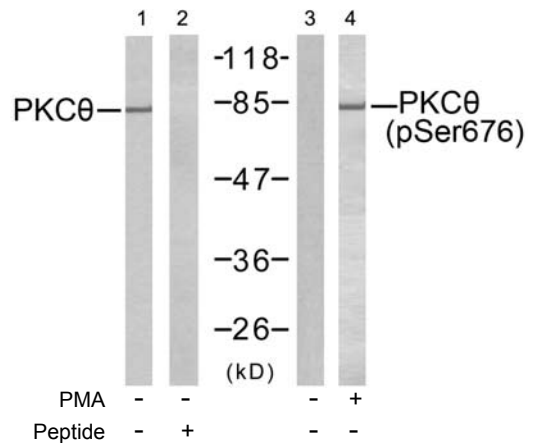
Specificity: The peptide specifically blocks the signal of PKC θ (phospho-Ser676) antibody (#11297) completely in Western blotting and IHC.

Applications: For Western blotting: add 10 μ l of antibody and 10 μ l of blocking peptide to 10 ml of antibody dilution buffer, and incubate at 4 $^{\circ}$ C over night or at room temperature for 2 hours before allowing to react with the blot.

References: Kristof Van Kolen, et al. (2006) FEBS J ; 273: 1843 - 1854.
Martin Villalba, et al. (2002) J. Cell Biol ; 157: 253.
Jie Zhang, et al. (2004) J. Biol. Chem ; 279: 22118 - 22123.
Castro AF, et al. (1998) Am J Physiol Cell Physiol; 275: C113 - C119.



P-Peptide - +
Immunohistochemical analysis of paraffin-embedded human lung carcinoma tissue, using PKC θ (phospho-Ser676) antibody (#11297).



Western blot analysis of extract from Jurkat cells untreated or treated with PMA (1ng/ml, 5min), using PKC θ (Ab-676) antibody (#21289, Lane 1 and 2) and PKC θ (phospho-Ser676) antibody (#11297, Lane 3 and 4).

For Research Use Only