



GSK3 β (Phospho-Tyr216) Antibody Blocking Peptide

#51301

Catalog Number: 51301

Amount: 100 μ g/100 μ l

Form of Peptide: Peptide in 10 mM phosphate buffered saline (without Mg²⁺ and Ca²⁺), pH 7.4, 150mM NaCl, 0.1 mM EDTA, 1 mg/ml BSA, 5% DMF and 5% glycerol.

Peptide Information: The synthesized phosphopeptide was derived from human GSK3 β around the phosphorylation site of tyrosine 216 (V-S-Y^P-I-C).

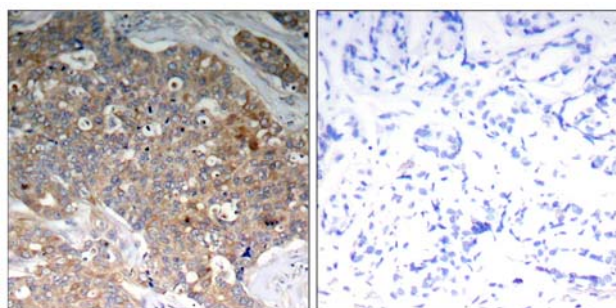
Storage: Store at -20 $^{\circ}$ C.

Quality Control: The quality of the peptide was evaluated by reversed-phase HPLC and mass spectrometry.

Specificity: The peptide specifically blocks the signal of GSK3 β (Phospho-Tyr216) antibody (#11301) completely in Western blotting and IHC.

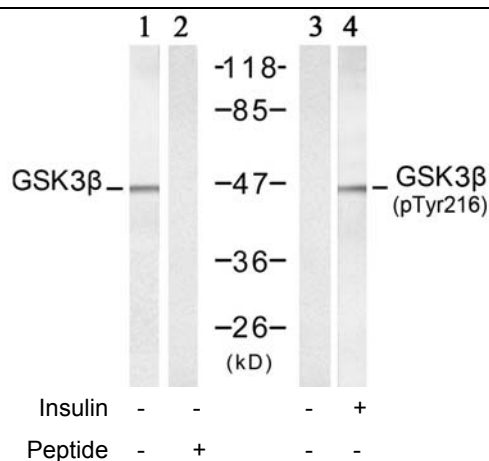
Applications: For Western blotting: add 10 μ l of antibody and 10 μ l of blocking peptide to 10 ml of antibody dilution buffer, and incubate at 4 $^{\circ}$ C over night or at room temperature for 2 hours before allowing to react with the blot.

References: Chin PC, et al. Brain Res Mol Brain Res 2005 Jun 13; 137(1-2): 193-201
Takahashi-Yanaga F, et al. Biochem Biophys Res Commun 2004 Apr 02; 316(2): 411-415
Fan G, et al. J Biol Chem 2003 Dec 26; 278(52): 52432-52436
Liao X, et al. Mol Cancer Ther 2003 Nov; 2(11): 1215-1222.



P-Peptide - +

Immunohistochemical analysis of paraffin-embedded human breast carcinoma tissue, using GSK3 β (Phospho-Tyr216) antibody (#11301).



Western blot analysis of extract from 293 cells, untreated or treated with insulin (40 μ M, 30min), using GSK3 β (Ab-216) Antibody (#21301, Lane 1 and 2) and GSK3 β (Phospho-Tyr216) Antibody (#11301, Lane 3 and 4).

For Research Use Only