



IκB-β (Phospho-Ser23) Antibody Blocking Peptide

#51304

Catalog Number: 51304

Amount: 100μg/100μl

Form of Peptide: Peptide in 10 mM phosphate buffered saline (without Mg²⁺ and Ca²⁺), pH 7.4, 150mM NaCl, 0.1 mM EDTA, 1 mg/ml BSA, 5% DMF and 5% glycerol.

Peptide Information: The synthesized phosphopeptide was derived from human IκB-β around the phosphorylation site of serine 23 (L-G-S^P-L-G).

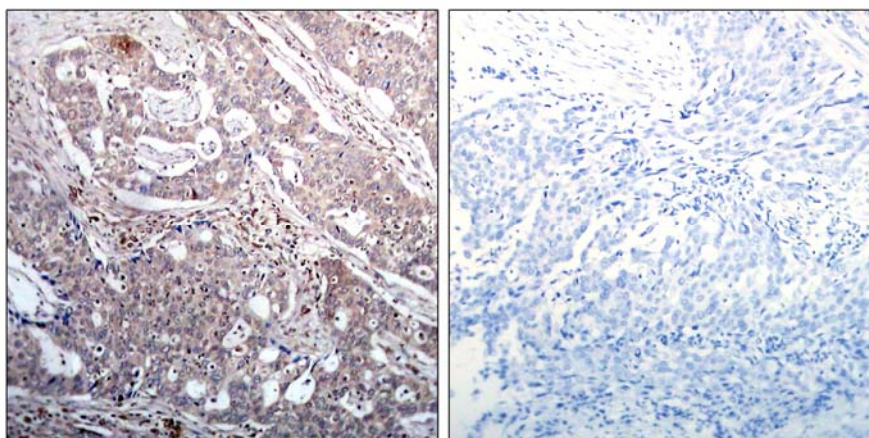
Storage: Store at -20°C.

Quality Control: The quality of the peptide was evaluated by reversed-phase HPLC and mass spectrometry.

Specificity: The peptide specifically blocks the signal of IκB-β (Phospho-Ser23) antibody (#11304) completely in IHC.

Applications: For Western blotting: add 10 μl of antibody and 10 μl of blocking peptide to 10 ml of antibody dilution buffer, and incubate at 4°C over night or at room temperature for 2 hours before allowing to react with the blot.

References: Shirane, M. et al. (1999) J Biol Chem 274, 28169-28174.
DiDonato J, et al. (1996) Mol Cell Biol 16(4): 1295-304.



P-Peptide

-

+

Immunohistochemical analysis of paraffin-embedded human breast carcinoma tissue, using IκB-β (Phospho-Ser23) antibody (#11304).

For Research Use Only