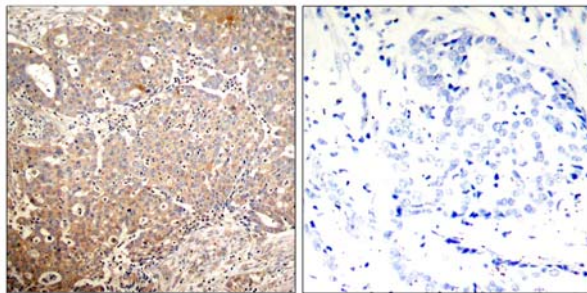




Keratin 18 (Phospho-Ser33) Antibody Blocking Peptide

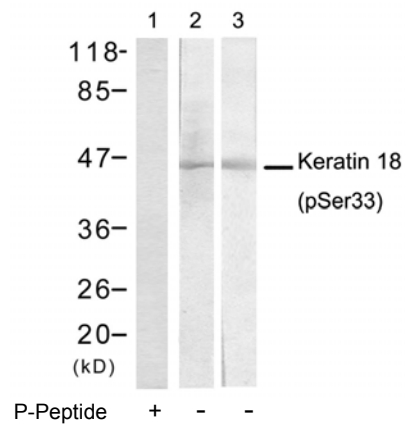
#51306

- Catalog Number:** 51306
- Amount:** 100µg/100µl
- Form of Peptide:** Peptide in 10 mM phosphate buffered saline (without Mg²⁺ and Ca²⁺), pH 7.4, 150mM NaCl, 0.1 mM EDTA, 1 mg/ml BSA, 5% DMF and 5% glycerol.
- Peptide Information:** The synthesized phosphopeptide was derived from human Keratin 18 around the phosphorylation site of serine 33 (A-A-S^P-V-Y).
- Storage:** Store at -20°C.
- Quality Control:** The quality of the peptide was evaluated by reversed-phase HPLC and mass spectrometry.
- Specificity:** The peptide specifically blocks the signal of Keratin 18 (Phospho-Ser33) antibody (#11306) completely in Western blotting and IHC.
- Applications:** For Western blotting: add 10 µl of antibody and 10 µl of blocking peptide to 10 ml of antibody dilution buffer, and incubate at 4°C over night or at room temperature for 2 hours before allowing to react with the blot.
- References:** Ramaekers, F.C. and Bosman, F.T. (2004) J. Pathol. 204, 351-354.
Chang, L. and Goldman, R.D. (2004) Nat. Rev. Mol. Cell Biol. 5, 601-613.
Moll, R. et al. (1982) Cell 31, 11-24.



P-Peptide - +

Immunohistochemical analysis of paraffin-embedded human breast carcinoma tissue using Keratin 18 (Phospho-Ser33) antibody (#11306).



Western blot analysis of extracts from A431 cells (Lane 1 and 2) and EC-304 cells (Lane 3) using Keratin 18 (Phospho-Ser33) antibody (#11306).

For Research Use Only