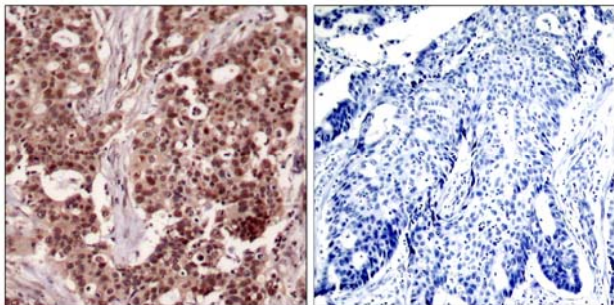




NFκB-p105/p50 (Phospho-Ser927) Antibody Blocking Peptide

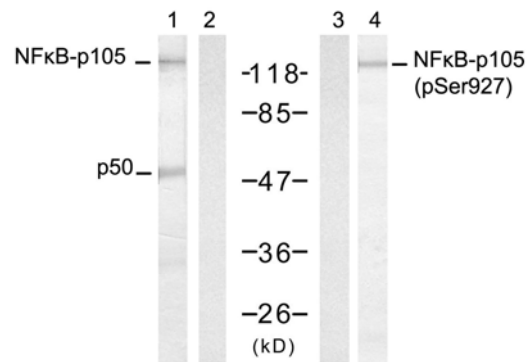
#51312

- Catalog Number:** 51312
- Amount:** 100µg/100µl
- Form of Peptide:** Peptide in 10 mM phosphate buffered saline (without Mg²⁺ and Ca²⁺), pH 7.4, 150mM NaCl, 0.1 mM EDTA, 1 mg/ml BSA, 5% DMF and 5% glycerol.
- Peptide Information:** The synthesized phosphopeptide was derived from human NFκB-p105/p50 around the phosphorylation site of serine 927 (C-D-S^P-G-V).
- Storage:** Store at -20°C.
- Quality Control:** The quality of the peptide was evaluated by reversed-phase HPLC and mass spectrometry.
- Specificity:** The peptide specifically blocks the signal of NFκB-p105/p50 (Phospho-Se927) antibody (#11312) completely in Western blotting and IHC.
- Applications:** For Western blotting: add 10 µl of antibody and 10 µl of blocking peptide to 10 ml of antibody dilution buffer, and incubate at 4°C over night or at room temperature for 2 hours before allowing to react with the blot.
- References:** Hou S, et al. (2003) J Biol Chem. 278(46): 45994-45998.
Baeuerle P A, et al. (1994) Annu Rev Immunol. 12:141-179.
Baeuerle P A, et al. (1996) Cell 87:13-20.
Haskill S, et al. (1991) Cell 65:1281-1289.



P-Peptide - +

Immunohistochemical analysis of paraffin-embedded human breast carcinoma tissue, using NFκB-p105/p50 (Phospho-Ser927) antibody (#11312).



	1	2	3	4
NFκB-p105	-	-	-	-
p50	-	-	-	-
TNF-α+Calyculin A	-	-	-	+
Peptide	-	+	-	-

Western blot analysis of extract from HT-29 cells, untreated or treated with TNF-α and Calyculin A, using NFκB-p105/p50 (Ab-927) antibody (#21312, Lane 1 and 2) and NFκB-p105/p50 (Phospho-Ser927) antibody (#11312, Lane 3 and 4).

For Research Use Only