



SHP-1 (Phospho-Tyr536) Antibody Blocking Peptide

#51318

Catalog Number: 51318

Amount: 100µg/100µl

Form of Peptide: Peptide in 10 mM phosphate buffered saline (without Mg²⁺ and Ca²⁺), pH 7.4, 150mM NaCl, 0.1 mM EDTA, 1 mg/ml BSA, 5% DMF and 5% glycerol.

Peptide Information: The synthesized phosphopeptide was derived from human SHP-1 around the phosphorylation site of tyrosine 536 (S-E-Y^P-G-N).

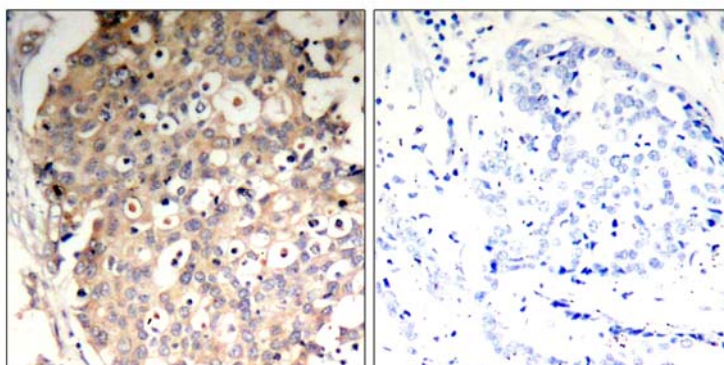
Storage: Store at -20°C.

Quality Control: The quality of the peptide was evaluated by reversed-phase HPLC and mass spectrometry.

Specificity: The peptide specifically blocks the signal of SHP-1 (Phospho-Tyr536) Antibody (#11318) completely in IHC.

Applications: For Western blotting: add 10 µl of antibody and 10 µl of blocking peptide to 10 ml of antibody dilution buffer, and incubate at 4°C over night or at room temperature for 2 hours before allowing to react with the blot.

References: Migone TS, et al. (1998) Proc Natl Acad Sci USA; 95(7): 3845-3850.
Timms JF, et al. (1998) Mol Cell Biol; 18(7): 3838-3850.
Kanagasundaram V, et al. (1999) Mol Cell Biol; 19(6): 4079-4092.
Hauck CR, et al. (1999) Infect Immun; 67(10): 5490-5494.



P-Peptide

-

+

Immunohistochemical analysis of paraffin-embedded human breast carcinoma tissue, using SHP-1 (Phospho-Tyr536) Antibody (#11318).

For Research Use Only