



## SHP-2 (Phospho-Tyr542) Antibody Blocking Peptide

#51319

**Catalog Number:** 51319

**Amount:** 100µg/100µl

**Form of Peptide:** Peptide in 10 mM phosphate buffered saline (without Mg<sup>2+</sup> and Ca<sup>2+</sup>), pH 7.4, 150mM NaCl, 0.1 mM EDTA, 1 mg/ml BSA, 5% DMF and 5% glycerol.

**Peptide Information:** The synthesized phosphopeptide was derived from human SHP-2 around the phosphorylation site of tyrosine 542 (H-E-Y<sup>P</sup>-T-N).

**Storage:** Store at -20°C.

**Quality Control:** The quality of the peptide was evaluated by reversed-phase HPLC and mass spectrometry.

**Specificity:** The peptide specifically blocks the signal of SHP-2 (Phospho-Tyr542) antibody (#11319) completely in Western blotting and IHC.

**Applications:** For Western blotting: add 10 µl of antibody and 10 µl of blocking peptide to 10 ml of antibody dilution buffer, and incubate at 4°C over night or at room temperature for 2 hours before allowing to react with the blot.

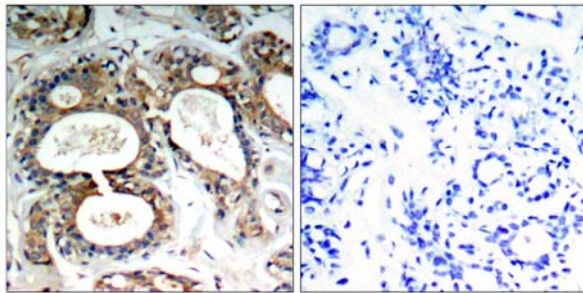
**References:** Ferjoux G, et al. (2003) Mol Biol Cell. 2003; 14(9): 3911-3928.

Shi ZQ, et al. (2000) Mol Cell Biol. 20(5): 1526-1536.

Li C, Friedman JM. (1999) Proc Natl Acad Sci U S A ; 96(17): 9677-9682

Mañes S, et al. (1999) Mol Cell Biol. 19(4): 3125-3135.

Oh ES, et al. (1999) Mol Cell Biol; 19(4): 3205-3215.

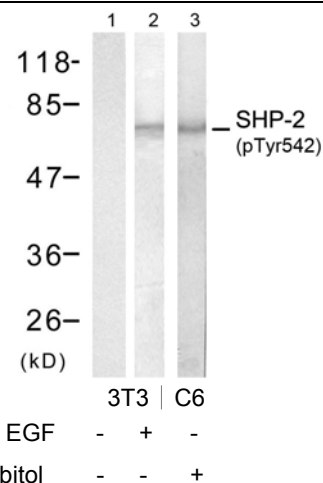


P-Peptide

-

+

Immunohistochemical analysis of paraffin-embedded human breast carcinoma tissue, using SHP-2 (Phospho-Tyr542) antibody (#11319).



Western blot analysis of extracts from NIH/3T3 treated with EGF (200ng/ml, 30min) or C6 cells treated with Sorbitol (0.4M, 30min), using SHP-2 (Phospho-Tyr542) antibody (#11319, Lane 1, 2 and 3).

**For Research Use Only**