



Smad1 (Phospho-Ser465) Antibody Blocking Peptide

#51321

Catalog Number: 51321

Amount: 100µg/100µl

Form of Peptide: Peptide in 10 mM phosphate buffered saline (without Mg²⁺ and Ca²⁺), pH 7.4, 150mM NaCl, 0.1 mM EDTA, 1 mg/ml BSA, 5% DMF and 5% glycerol.

Peptide Information: The synthesized phosphopeptide was derived from human Smad1 around the phosphorylation site of serine 465 (I-S-S-V-S^P).

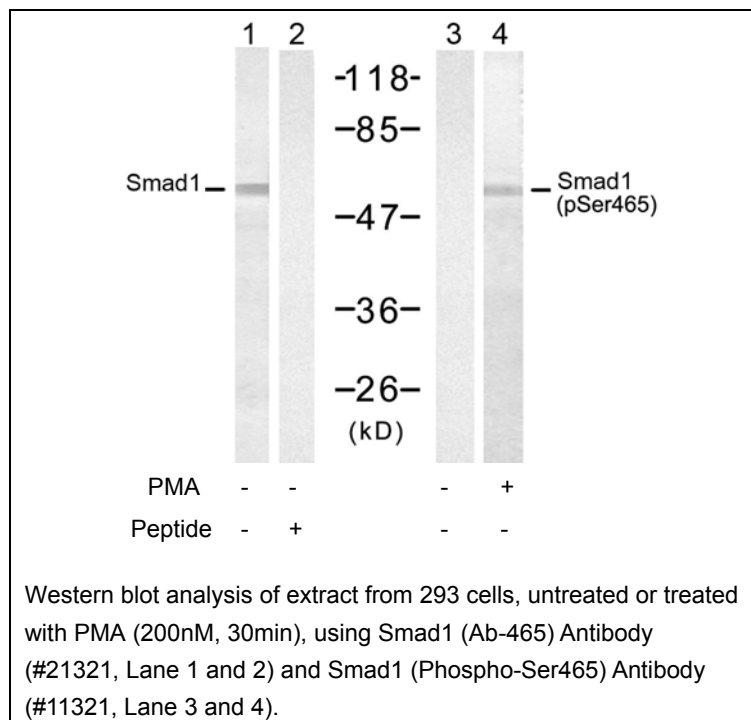
Storage: Store at -20°C.

Quality Control: The quality of the peptide was evaluated by reversed-phase HPLC and mass spectrometry.

Specificity: The peptide specifically blocks the signal of Smad1 (Phospho-Ser465) Antibody (#11321) completely in Western blotting.

Applications: For Western blotting: add 10 µl of antibody and 10 µl of blocking peptide to 10 ml of antibody dilution buffer, and incubate at 4°C over night or at room temperature for 2 hours before allowing to react with the blot.

References: Hiroaki Seto, et al. (2004) J Clin Invest. March 1; 113(5): 718–726
Linyu Li, et al. (2004) Mol Cell Biol. January; 24(2): 856–864.
Claire Nourry, et al. (2004) BMC Cell Biol. 5: 20.



For Research Use Only