



## CARM1 (Phospho-Ser228) Antibody Blocking Peptide

#51331

**Catalog Number:** 51331

**Amount:** 100µg/100µl

**Form of Peptide:** Peptide in 10 mM phosphate buffered saline (without Mg<sup>2+</sup> and Ca<sup>2+</sup>), pH 7.4, 150mM NaCl, 0.1 mM EDTA, 1 mg/ml BSA, 5% DMF and 5% glycerol.

**Peptide Information:** The synthesized phosphopeptide was derived from human CARM1 around the phosphorylation site of serine 228 (V-K-S<sup>P</sup>-N-N).

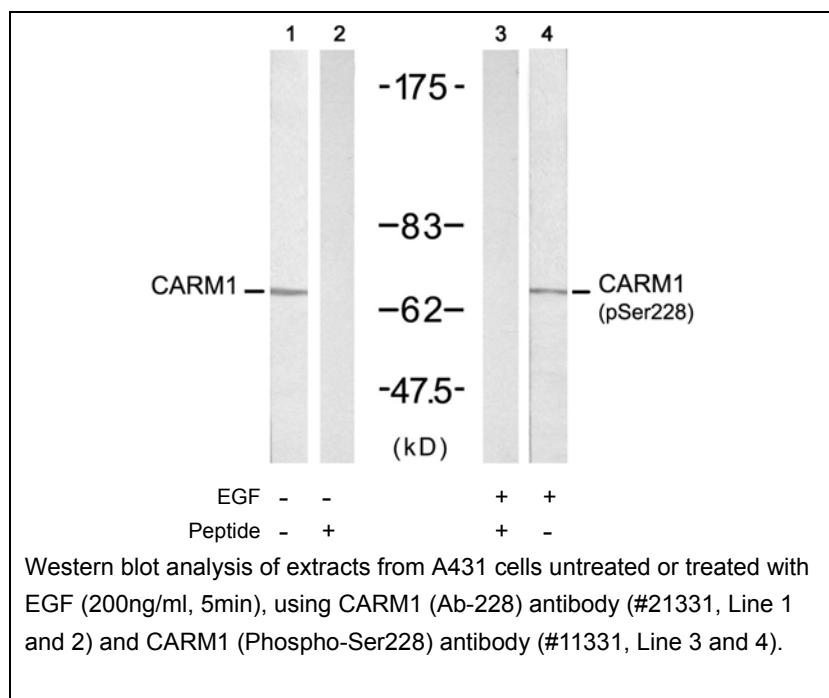
**Storage:** Store at -20°C.

**Quality Control:** The quality of the peptide was evaluated by reversed-phase HPLC and mass spectrometry.

**Specificity:** The peptide specifically blocks the signal of CARM1 (Phospho-Ser228) antibody (#11331) completely in Western blotting.

**Applications:** For Western blotting: add 10 µl of antibody and 10 µl of blocking peptide to 10 ml of antibody dilution buffer, and incubate at 4°C over night or at room temperature for 2 hours before allowing to react with the blot.

**References:** Selma El Messaoudi, et al. (2006) Proc Natl Acad Sci U S A; 103(36): 13351–13356.  
Marcela Covic, et al. (2005) EMBO J; 24(1): 85–96.  
Eleni Zika et al. (2005) Proc Natl Acad Sci U S A.; 102(45): 16321–16326  
Neelu Yadav et al. (2003) Proc Natl Acad Sci U S A; 100(11): 6464–6468.



**For Research Use Only**