



Pyruvate Microplate Assay Kit

Catalog # AS0016

Detection and Quantification of Pyruvic Acid Content in Urine,
Serum, Plasma, Tissue extracts, Cell lysate, Cell culture media and
Other biological fluids Samples.

This instruction must be read in its entirety before using this product.

For research use only, Not for use in diagnostic procedures.

Contact information:

Tel:+1 (301) 446-2499 Fax:+1 (301) 446-2413

Email:techcn@signalwayantibody.com Web:www.sabbiotech.com

I. INTRODUCTION.....	2
II. KIT COMPONENTS.....	3
III. MATERIALS REQUIRED BUT NOT PROVIDED.....	3
VI. SAMPLE PREPARATION.....	4
V. ASSAY PROCEDURE.....	5
VI. CALCULATION.....	6
VII. TYPICAL DATA.....	7
VIII. TECHNICAL SUPPORT.....	7
IX. NOTES.....	7

I. INTRODUCTION

Pyruvate (Pyruvic acid) is an alpha-keto acid that plays a central role in various biochemical pathways. As a product of fermentation, pyruvic acid can be found in large quantities, especially in dark beers. This acid is also found in wine, fruits (e.g. apple) and cheese. The salt form of this acid is the active ingredient in various dietary supplements implicated in the control of body weight. The concentration of pyruvic acid in blood and urine is a useful clinical marker for certain medical conditions. Pyruvic acid can react with 2,4-dinitrophenylhydrazine. The reaction products can be measured at a colorimetric readout at 520 nm.

II. KIT COMPONENTS

Component	Volume	Storage
96-Well Microplate	1 plate	
Assay Buffer	30 ml x 4	4 °C
Reaction Buffer	10 ml x 1	4 °C
Dye Reagent	3 ml x 1	4 °C
Standard (50 µg/ml)	1 ml x 1	4 °C
Plate Adhesive Strips	3 Strips	
Technical Manual	1 Manual	

III. MATERIALS REQUIRED BUT NOT PROVIDED

1. Microplate reader to read absorbance at 520 nm
2. Distilled water
3. Pipettor
4. Pipette tips
5. Mortar
6. Ice
7. Centrifuge
8. Timer

IV. SAMPLE PREPARATION

1. For cell and bacteria samples

Collect cell or bacteria into centrifuge tube, discard the supernatant after centrifugation, add 1 ml Assay buffer for 5×10^6 cell or bacteria, sonicate (with power 20%, sonication 3s, interval 10s, repeat 30 times); centrifuged at 8000g 4°C for 10 minutes, take the supernatant into a new centrifuge tube and keep it on ice for detection.

2. For tissue samples

Weigh 0.1 g tissue, homogenize with 1 ml Assay buffer on ice, centrifuged at 8000g 4°C for 10 minutes, take the supernatant into a new centrifuge tube and keep it on ice for detection.

3. For serum, plasma samples

Add 0.1 ml serum, plasma into 1 ml Assay buffer on ice, centrifuged at 8000g 4 °C for 10 minutes, take the supernatant into a new centrifuge tube and keep it on ice for detection.

V. ASSAY PROCEDURE

Add following reagents into the microplate:

Reagent	Sample	Standard	Blank
Sample	75µl	--	--
Standard	--	75µl	--
Distilled water	--	--	75µl
Dye Reagent	25µl	25µl	25µl
Mix, stand at room temperature for 2 minutes.			
Reaction Buffer	100 µl	100 µl	100 µl
Mix, record the absorbance measured at 520nm.			

VI. CALCULATION

1. According to the protein concentration of sample

$$\begin{aligned} \text{PA } (\mu\text{g}/\text{mg}) &= (\text{C}_{\text{Standard}} \times \text{V}_{\text{Sample}}) \times (\text{OD}_{\text{Sample}} - \text{OD}_{\text{Blank}}) / (\text{OD}_{\text{Standard}} - \text{OD}_{\text{Blank}}) / \\ & \quad (\text{V}_{\text{Sample}} \times \text{C}_{\text{Protein}}) \\ &= 50 \times (\text{OD}_{\text{Sample}} - \text{OD}_{\text{Blank}}) / (\text{OD}_{\text{Standard}} - \text{OD}_{\text{Blank}}) / \text{C}_{\text{Protein}} \end{aligned}$$

2. According to the weight of sample

$$\begin{aligned} \text{PA } (\mu\text{g}/\text{g}) &= (\text{C}_{\text{Standard}} \times \text{V}_{\text{Sample}}) \times (\text{OD}_{\text{Sample}} - \text{OD}_{\text{Blank}}) / (\text{OD}_{\text{Standard}} - \text{OD}_{\text{Blank}}) / (\text{V}_{\text{Sample}} \times \text{W} / \\ & \quad \text{V}_{\text{Assay}}) \\ &= 50 \times (\text{OD}_{\text{Sample}} - \text{OD}_{\text{Blank}}) / (\text{OD}_{\text{Standard}} - \text{OD}_{\text{Blank}}) / \text{W} \end{aligned}$$

3. According to the quantity of cell or bacteria

$$\begin{aligned} \text{PA } (\mu\text{g}/10^4) &= (\text{C}_{\text{Standard}} \times \text{V}_{\text{Sample}}) \times (\text{OD}_{\text{Sample}} - \text{OD}_{\text{Blank}}) / (\text{OD}_{\text{Standard}} - \text{OD}_{\text{Blank}}) / (\text{N} \times \text{V}_{\text{Sample}} / \\ & \quad \text{V}_{\text{Assay}}) \\ &= 50 \times (\text{OD}_{\text{Sample}} - \text{OD}_{\text{Blank}}) / (\text{OD}_{\text{Standard}} - \text{OD}_{\text{Blank}}) / \text{N} \end{aligned}$$

4. According to the volume of serum, plasma

$$\begin{aligned} \text{PA } (\mu\text{g}/\text{ml}) &= (\text{C}_{\text{Standard}} \times \text{V}_{\text{Sample}}) \times (\text{OD}_{\text{Sample}} - \text{OD}_{\text{Blank}}) / (\text{OD}_{\text{Standard}} - \text{OD}_{\text{Blank}}) / (\text{V} \times \text{V}_{\text{Sample}} / \\ & \quad \text{V}_{\text{Assay}}) \\ &= 50 \times (\text{OD}_{\text{Sample}} - \text{OD}_{\text{Blank}}) / (\text{OD}_{\text{Standard}} - \text{OD}_{\text{Blank}}) / \text{V} \end{aligned}$$

$\text{C}_{\text{Standard}}$: the protein concentration, 50 $\mu\text{g}/\text{ml}$;

$\text{C}_{\text{Protein}}$: the protein concentration, mg/ml ;

W: the weight of sample, g;

V: the volume of serum or plasma, ml;

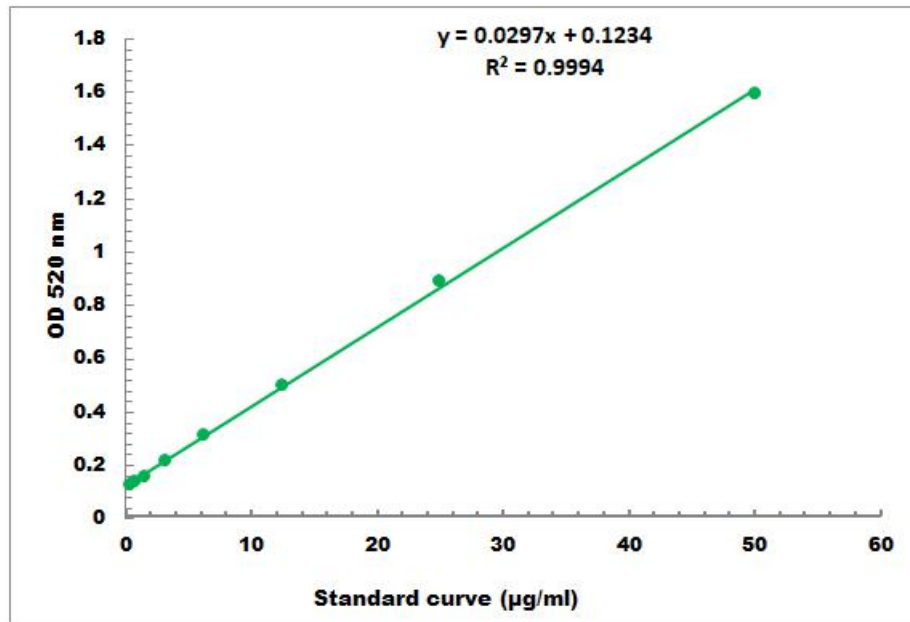
N: the quantity of cell or bacteria, $\text{N} \times 10^4$;

V_{Sample} : the volume of sample, 0.075 ml;

V_{Assay} : the volume of Assay buffer, 1 ml;

VII. TYPICAL DATA

The standard curve is for demonstration only. A standard curve must be run with each assay.



Detection Range: 0.5 µg/ml -50 µg/ml

VIII. TECHNICAL SUPPORT

For troubleshooting, information or assistance, please go online to www.sabbiotech.cn or contact us at techcn@signalwayantibody.com

IX. NOTES