



# Glucose-6-Phosphate Dehydrogenase Microplate Assay Kit

**Catalog # AS0046**

Detection and Quantification of Glucose-6-Phosphate  
Dehydrogenase Activity in Urine, Serum, Plasma, Tissue extracts,  
Cell lysate, Cell culture media and Other biological fluids Samples.

This instruction must be read in its entirety before using this product.

For research use only, Not for use in diagnostic procedures.

Contact information:

Tel:+1 (301) 446-2499 Fax:+1 (301) 446-2413

Email:[techcn@signalwayantibody.com](mailto:techcn@signalwayantibody.com) Web:[www.sabbiotech.com](http://www.sabbiotech.com)

I. INTRODUCTION.....	2
II. KIT COMPONENTS.....	3
III. MATERIALS REQUIRED BUT NOT PROVIDED.....	3
VI. SAMPLE PREPARATION.....	4
V. ASSAY PROCEDURE.....	5
VI. CALCULATION.....	6
VII. TYPICAL DATA.....	7
VIII. TECHNICAL SUPPORT.....	7
IX. NOTES.....	7

## I. INTRODUCTION

Glucose 6 phosphate dehydrogenase (G6PDH) is a cytosolic enzyme in the pentose phosphate pathway, a metabolic pathway that supplies reducing energy to cells (such as erythrocytes) by maintaining the level of the co-enzyme nicotinamide adenine dinucleotide phosphate (NADPH). The NADPH in turn maintains the level of glutathione in these cells that helps protect the red blood cells against oxidative damage. Of greater quantitative importance is the production of NADPH for tissues actively engaged in biosynthesis of fatty acids and/or isoprenoids, such as the liver, mammary glands, adipose tissue, and the adrenal glands.

The reaction velocity is determined by measuring the increase in absorbance at 340 nm resulting from the reduction of NADP.

## II. KIT COMPONENTS

Component	Volume	Storage
96-Well Microplate	1 plate	
Assay Buffer	30 ml x 4	4 °C
Substrate Diluent	20 ml x 1	4 °C
Substrate	Powder x 1	-20 °C
Standard	Powder x 1	-20 °C
Technical Manual	1 Manual	

### Note:

**Substrate:** add 19 ml Substrate Diluent to dissolve before use.

**Standard:** add 1 ml distilled water to dissolve before use; then add 0.2 ml into 0.8 ml distilled water, the concentration will be 400  $\mu\text{mol/L}$ .

## III. MATERIALS REQUIRED BUT NOT PROVIDED

1. Microplate reader to read absorbance at 340 nm
2. Distilled water
3. Pipettor
4. Pipette tips
5. Mortar
6. Centrifuge
7. Timer
8. Ice

#### IV. SAMPLE PREPARATION

##### 1. For cell and bacteria samples

Collect cell or bacteria into centrifuge tube, discard the supernatant after centrifugation, add 1 ml Assay buffer for  $5 \times 10^6$  cell or bacteria, sonicate (with power 20%, sonication 3s, interval 10s, repeat 30 times); centrifuged at 8000g 4°C for 10 minutes, take the supernatant into a new centrifuge tube and keep it on ice for detection.

##### 2. For tissue samples

Weigh out 0.1 g tissue, homogenize with 1 ml Assay buffer on ice, centrifuged at 8000g 4°C for 10 minutes, take the supernatant into a new centrifuge tube and keep it on ice for detection.

##### 3. For serum or plasma samples

Detect directly.

## V. ASSAY PROCEDURE

Warm all reagents to room temperature before use.

Add following reagents in the microplate:

Reagent	Sample	Standard	Blank
Standard	--	200 $\mu$ l	--
Distilled water	--	--	200 $\mu$ l
Substrate	190 $\mu$ l	--	--
Sample	10 $\mu$ l	--	--
Mix, measured at 340 nm and record the absorbance of 10th second and 130th second.			

**Note:** if the enzyme activity is lower, please add more sample into the reaction system; or increase the reaction time.

## VI. CALCULATION

**Unit Definition:** One unit of G6PDH is defined as the enzyme produce 1nmolNADPH per minute.

1. According to the protein concentration of sample

$$\begin{aligned} \text{G6PDH (U/mg)} &= (C_{\text{Standard}} \times V_{\text{Standard}}) \times (\text{OD}_{\text{Sample(130S)}} - \text{OD}_{\text{Sample(10S)}}) / (\text{OD}_{\text{Standard}} - \text{OD}_{\text{Blank}}) / \\ &\quad (V_{\text{Sample}} \times C_{\text{Protein}}) / T \\ &= 4000 \times (\text{OD}_{\text{Sample(130S)}} - \text{OD}_{\text{Sample(10S)}}) / (\text{OD}_{\text{Standard}} - \text{OD}_{\text{Blank}}) / C_{\text{Protein}} \end{aligned}$$

2. According to the weight of sample

$$\begin{aligned} \text{G6PDH (U/g)} &= (C_{\text{Standard}} \times V_{\text{Standard}}) \times (\text{OD}_{\text{Sample(130S)}} - \text{OD}_{\text{Sample(10S)}}) / (\text{OD}_{\text{Standard}} - \text{OD}_{\text{Blank}}) / \\ &\quad (V_{\text{Sample}} \times W / V_{\text{Assay}}) / T \\ &= 4000 \times (\text{OD}_{\text{Sample(130S)}} - \text{OD}_{\text{Sample(10S)}}) / (\text{OD}_{\text{Standard}} - \text{OD}_{\text{Blank}}) / W \end{aligned}$$

3. According to the quantity of cells or bacteria

$$\begin{aligned} \text{G6PDH (U/10}^4\text{)} &= (C_{\text{Standard}} \times V_{\text{Standard}}) \times (\text{OD}_{\text{Sample(130S)}} - \text{OD}_{\text{Sample(10S)}}) / (\text{OD}_{\text{Standard}} - \text{OD}_{\text{Blank}}) / \\ &\quad (V_{\text{Sample}} \times N / V_{\text{Assay}}) / T \\ &= 4000 \times (\text{OD}_{\text{Sample(130S)}} - \text{OD}_{\text{Sample(10S)}}) / (\text{OD}_{\text{Standard}} - \text{OD}_{\text{Blank}}) / N \end{aligned}$$

4. According to the volume of sample

$$\begin{aligned} \text{G6PDH (U/ml)} &= (C_{\text{Standard}} \times V_{\text{Standard}}) \times (\text{OD}_{\text{Sample(130S)}} - \text{OD}_{\text{Sample(10S)}}) / (\text{OD}_{\text{Standard}} - \text{OD}_{\text{Blank}}) / \\ &\quad V_{\text{Sample}} / T \\ &= 4000 \times (\text{OD}_{\text{Sample(130S)}} - \text{OD}_{\text{Sample(10S)}}) / (\text{OD}_{\text{Standard}} - \text{OD}_{\text{Blank}}) \end{aligned}$$

$C_{\text{Standard}}$ : the standard concentration, 400  $\mu\text{mol/L}$  = 400nmol/ml;

$V_{\text{Standard}}$ : the volume of standard, 200  $\mu\text{l}$  = 0.2 ml;

$C_{\text{Protein}}$ : the protein concentration, mg/ml;

W: the weight of sample, g;

N: the quantity of cell or bacteria,  $N \times 10^4$ ;

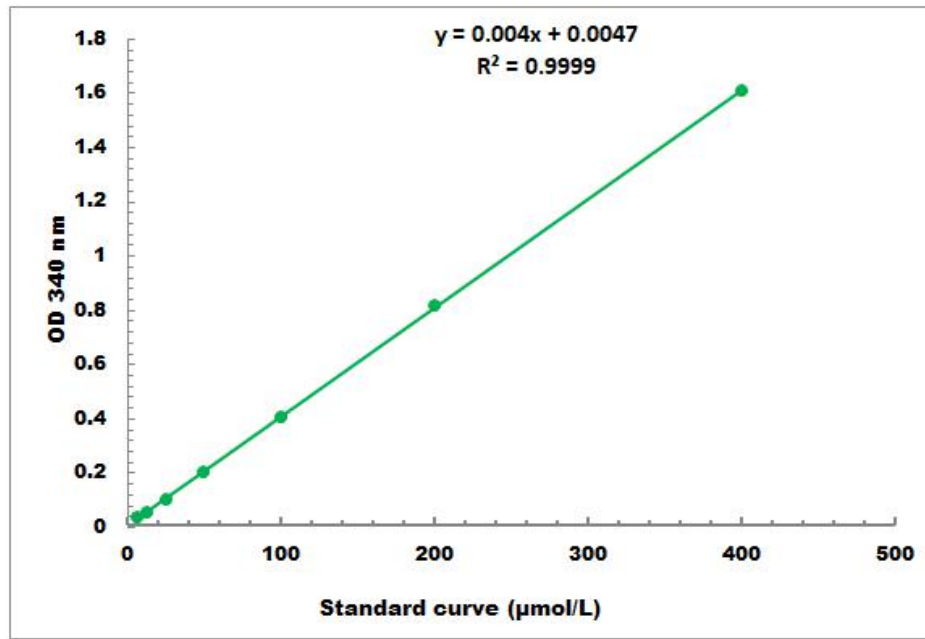
$V_{\text{Sample}}$ : the volume of sample, 0.01 ml;

$V_{\text{Assay}}$ : the volume of Assay buffer, 1 ml;

T: the reaction time, 2 minutes.

## VII. TYPICAL DATA

The standard curve is for demonstration only. A standard curve must be run with each assay.



Detection Range: 4µmol/L - 400 µmol/L

## VIII. TECHNICAL SUPPORT

For troubleshooting, information or assistance, please go online to [www.sabbiotech.cn](http://www.sabbiotech.cn) or contact us at [techcn@signalwayantibody.com](mailto:techcn@signalwayantibody.com)

## IX. NOTES