

Glutathione Peroxidase Microplate Assay Kit



Catalog Number: AS0193

Detection and Quantification of Glutathione Peroxidase (GPX) Activity in Serum, Plasma, Other biological fluids, Tissue extracts, Cell lysate, Cell culture media Samples.

This instruction must be read in its entirety before using this product.

For research use only. Not for use in diagnostic procedures.

Contact information

Tel: 1-301-446-2499

Fax: 1-301-446-2413

Email: tech@signalwayantibody.com

Web: www.sabbiotech.com

I. INTRODUCTION

Glutathione Peroxidase (EC 1.11.1.9) family of enzymes play important roles in the protection of organisms from oxidative damage. GPX converts reduced glutathione (GSH) to oxidized glutathione (GSSG) while reducing lipid hydroperoxides to their corresponding alcohols or free hydrogen peroxide to water. Several isozymes have been found in different cellular locations and with different substrate specificity. Low levels of GPX have been correlated with free radical related disorders.

Glutathione Peroxidase Microplate Assay Kit is a sensitive assay for determining Glutathione Peroxidase activity in various samples. GPX reduces Hydroperoxide while oxidizing GSH to GSSG. GSH may react with DTNB. The decrease of GSH is proportional to GPX activity.

II. KIT COMPONENTS

Component	Volume	Storage
96-Well Microplate	1 plate	
Assay Buffer	30 ml x 4	4 °C
Substrate I	Powder x 1	4 °C
Substrate II	1 ml x 1	4 °C
Reaction Buffer	10 ml x 1	4 °C
Stop Solution	15 ml x 1	4 °C
Dye Reagent	Powder x 1	4 °C
Standard	Powder x 1	4 °C
Technical Manual	1 Manual	

Note:

Substrate I: add 2 ml distilled water to dissolve before use.

Dye Reagent: add 2 ml distilled water to dissolve before use.

Standard: add 1 ml distilled water to dissolve, then add 500 μ l Standard into 500 μ l distilled water, the concentration will be 5 mmol/L.

III. MATERIALS REQUIRED BUT NOT PROVIDED

1. Microplate reader to read absorbance at 423 nm
2. Distilled water
3. Pipettor, multi-channel pipettor
4. Pipette tips
5. Mortar
6. Centrifuge
7. Timer

IV. SAMPLE PREPARATION

1. For cell and bacteria samples

Collect cell or bacteria into centrifuge tube, discard the supernatant after centrifugation, add 1 ml Assay buffer for 5×10^6 cell or bacteria, sonicate (with power 20%, sonicate 3s, interval 10s, repeat 30 times); centrifuged at 8000g 4 °C for 10 minutes, take the supernatant into a new centrifuge tube and keep it on ice for detection.

2. For tissue samples

Weigh out 0.1 g tissue, homogenize with 1 ml Assay buffer on ice, centrifuged at 8000g 4 °C for 10 minutes, take the supernatant into a new centrifuge tube and keep it on ice for detection.

3. For serum, plasma or other biological fluids samples
Detect directly.

V. ASSAY PROCEDURE

Add following reagents in the microcentrifuge tube:

Reagent	Sample	Control	Standard	Blank
Substrate I	20 μ l	20 μ l	--	--
Sample	20 μ l	--	--	--
Distilled water	--	20 μ l	30 μ l	50 μ l
Shake and mix, put it in water bath of 37 °C for 30 minutes.				
Substrate II	10 μ l	10 μ l	--	--
Shake and mix, put it in water bath of 37 °C for 3 minutes.				
Standard	--	--	20 μ l	--
Stop Solution	150 μ l	150 μ l	150 μ l	150 μ l
Shake and mix, centrifuged at 5000g for 10 minutes. Then add the Supernatant into the microplate.				
Supernatant	80 μ l	80 μ l	80 μ l	80 μ l
Reaction Buffer	100 μ l	100 μ l	100 μ l	100 μ l
Dye Reagent	20 μ l	20 μ l	20 μ l	20 μ l
Record absorbance measured at 423 nm.				

Note:

- 1) Perform 2-fold serial dilutions of the top standards to make the standard curve.
- 2) For unknown samples, we recommend doing a pilot experiment & testing several doses to ensure the readings are within the standard curve range. If the enzyme activity is lower, please add more sample into the reaction system; or increase the reaction time; if the enzyme activity is higher, please dilute the sample, or decrease the reaction time.

VI. CALCULATION

Unit Definition: One unit of GPX activity is defined as the enzyme decomposes 1 nmol of GSH per minute.

1. According to the protein concentration of sample

$$\begin{aligned} \text{GPX (U/mg)} &= C_{\text{Standard}} \times V_{\text{Standard}} \times (\text{OD}_{\text{Control}} - \text{OD}_{\text{Sample}}) / (\text{OD}_{\text{Standard}} - \text{OD}_{\text{Blank}}) / (V_{\text{Sample}} \times C_{\text{Protein}}) / T \\ &= 1666.5 \times (\text{OD}_{\text{Control}} - \text{OD}_{\text{Sample}}) / (\text{OD}_{\text{Standard}} - \text{OD}_{\text{Blank}}) / \\ &C_{\text{Protein}} \end{aligned}$$

2. According to the weight of sample

$$\begin{aligned}\text{GPX (U/g)} &= C_{\text{Standard}} \times V_{\text{Standard}} \times (\text{OD}_{\text{Control}} - \text{OD}_{\text{Sample}}) / (\text{OD}_{\text{Standard}} \\ &- \text{OD}_{\text{Blank}}) / (V_{\text{Sample}} \times W / V_{\text{Assay}}) / T \\ &= 1666.5 \times (\text{OD}_{\text{Control}} - \text{OD}_{\text{Sample}}) / (\text{OD}_{\text{Standard}} - \text{OD}_{\text{Blank}}) / \\ &W\end{aligned}$$

3. According to the volume of sample

$$\begin{aligned}\text{GPX (U/ml)} &= C_{\text{Standard}} \times V_{\text{Standard}} \times (\text{OD}_{\text{Control}} - \text{OD}_{\text{Sample}}) / (\text{OD}_{\text{Standard}} \\ &- \text{OD}_{\text{Blank}}) / V_{\text{Sample}} / T \\ &= 1666.5 \times (\text{OD}_{\text{Control}} - \text{OD}_{\text{Sample}}) / (\text{OD}_{\text{Standard}} - \text{OD}_{\text{Blank}})\end{aligned}$$

C_{Standard} : the standard concentration, 5 mmol/L = 5000 nmol/ml;

V_{Standard} : the volume of standard, 0.02 ml;

C_{Protein} : the protein concentration, mg/ml;

W : the weight of sample, g;

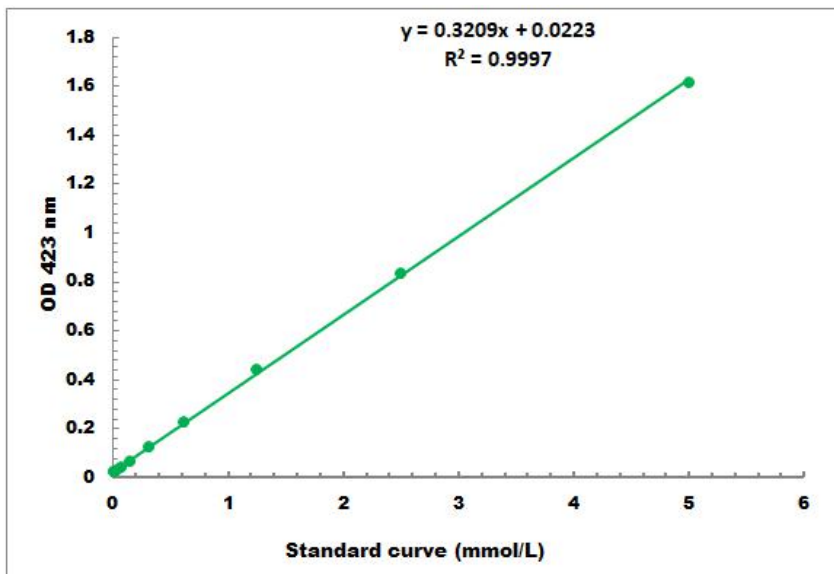
V_{Sample} : the volume of sample, 0.02 ml;

V_{Assay} : the volume of Assay Buffer, 1 ml;

T : the reaction time, 3 minutes.

VII. TYPICAL DATA

The standard curve is for demonstration only. A standard curve must be run with each assay.



Detection Range: 0.01 mmol/L - 5 mmol/L

VIII. TECHNICAL SUPPORT

For troubleshooting, information or assistance, please go online to www.sabbiotech.cn or contact us at techcn@signalwayantibody.com