

AD7C-NTP Antibody

Catalog No: #36756



Package Size: #36756-1 50ul #36756-2 100ul

Orders: order@signalwayantibody.com

Support: tech@signalwayantibody.com

Description

Product Name	AD7C-NTP Antibody
Host Species	Rabbit
Clonality	Polyclonal
Purification	affinity purified by Protein A
Applications	WB, IHC-P, IHC-F, ICC, IF, ELISA
Species Reactivity	Hu
Specificity	The antibody detects endogenous levels of total AD7C-NTP protein.
Immunogen Description	KLH conjugated synthetic peptide derived from human Neuronal thread protein AD7c-NTP: 1-375/375
Target Name	AD7C-NTP
Other Names	AD7CNTP
Accession No.	Swiss-Prot#: NCBI Gene ID: 27308Gene Accssion: AF010144
SDS-PAGE MW	41kd
Concentration	1mg/ml
Formulation	0.01M TBS (pH7.4) with 1% BSA, 0.02% Proclin300 and 50% Glycerol.
Storage	Shipped at 4°. Store at -20° for one year. Avoid repeated freeze/thaw cycles.

Application Details

WB 1:500-1:2000

IHC-P 1:100-500

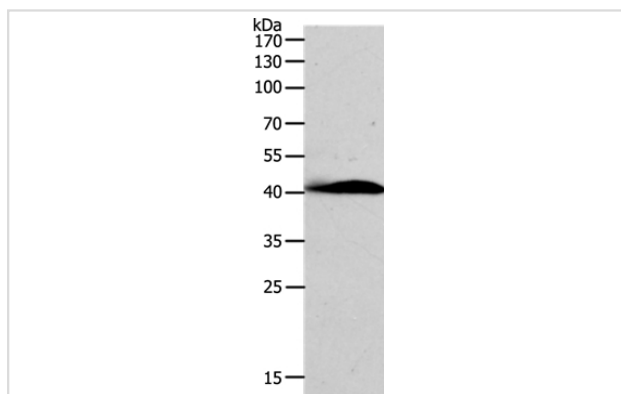
IHC-F 1:100-500

ICC 1:100-500

IF 1:100-500

ELISA 1:5000-10000

Images



Gel: 10%SDS-PAGE

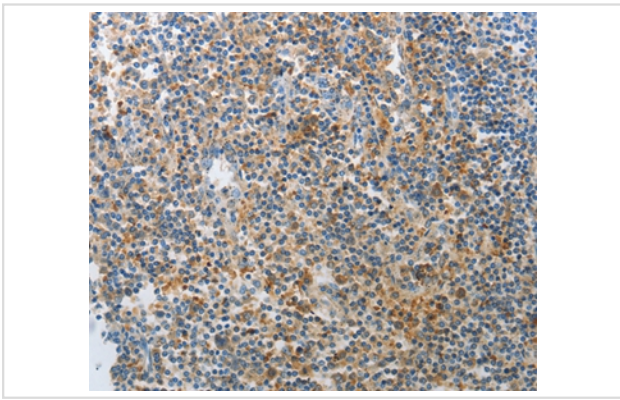
Lysates (from left to right): Human fetal brain tissue

Amount of lysate: 60ug per lane

Primary antibody: 1/500 dilution

Secondary antibody dilution: 1/8000

Exposure time: 1 minute



Immunohistochemical analysis of paraffin-embedded Human tonsil tissue using #36756 at dilution 1/25.

Background

AD7c-NTP is detected in increased concentration in the cortical neurons, brain-tissue extracts, cerebrospinal fluid, and urine early in the course of AD neurodegeneration, and its level is positively correlated with the severity of dementia. All these characteristics make it a possible biomarker for AD.

Note: This product is for in vitro research use only and is not intended for use in humans or animals.