

## SLC2A12 Antibody

Catalog No: #36906

Package Size: #36906-1 50ul #36906-2 100ul

Orders: order@signalwayantibody.com

Support: tech@signalwayantibody.com

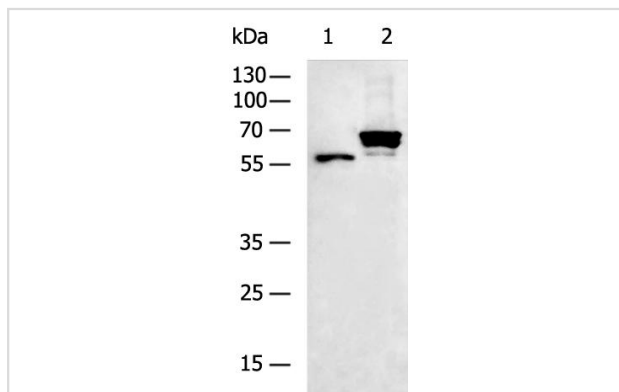
## Description

Product Name	SLC2A12 Antibody
Host Species	Rabbit
Clonality	Polyclonal
Purification	Antigen affinity purification.
Applications	WB
Species Reactivity	Human, Mouse
Specificity	The antibody detects endogenous levels of SLC2A12 protein.
Immunogen Type	Peptide
Immunogen Description	Synthetic peptide of human SLC2A12
Target Name	SLC2A12
Other Names	GLUT8; GLUT12
Accession No.	Swiss-Prot#: Q8TD20NCBI Gene ID: 154091Gene Accssion: NP_660159
SDS-PAGE MW	67kd
Concentration	0.9 mg/ml
Formulation	Rabbit IgG in pH7.3 PBS, 0.05% NaN <sub>3</sub> , 50% Glycerol.
Storage	Store at -20°C

## Application Details

WB: 1:1000-1:5000

## Images



Gel: 8%SDS-PAGE

Lysate: 10 ug

Lane 1-2: Human placenta tissue, Mouse skin tissue lysates

Primary antibody: (SLC2A12 Antibody) at dilution 1/1000

Secondary antibody: (HRP-conjugated Goat anti rabbit IgG) at 1/5000 dilution

Exposure time: 8 seconds (Detected by Chemiluminescence Imager)

## Background

SLC2A12 belongs to a family of transporters that catalyze the uptake of sugars through facilitated diffusion (Rogers et al., 2002). This family of transporters show conservation of 12 transmembrane helices as well as functionally significant amino acid residues.

---

Note: This product is for in vitro research use only and is not intended for use in humans or animals.