

MYOD1 Antibody

Catalog No: #36992

Package Size: #36992-1 50ul #36992-2 100ul

Orders: order@signalwayantibody.comSupport: tech@signalwayantibody.com

Description

Product Name	MYOD1 Antibody
Host Species	Rabbit
Clonality	Polyclonal
Purification	Antigen affinity purification.
Applications	WB, IHC
Species Reactivity	Human, Mouse, Rat
Specificity	The antibody detects endogenous levels of total MYOD1 protein.
Immunogen Type	Peptide
Immunogen Description	Synthetic peptide corresponding to residues near the C terminal of human myogenic differentiation 1
Target Name	MYOD1
Other Names	PUM; MYF3; MYOD; bHLHc1
Accession No.	Swiss-Prot#: P15172NCBI Gene ID: 4654Gene Accssion: NP_002469
Concentration	1.3 mg/ml
Formulation	Rabbit IgG in pH7.3 PBS, 0.05% NaN ₃ , 50% Glycerol.
Storage	Store at -20°C

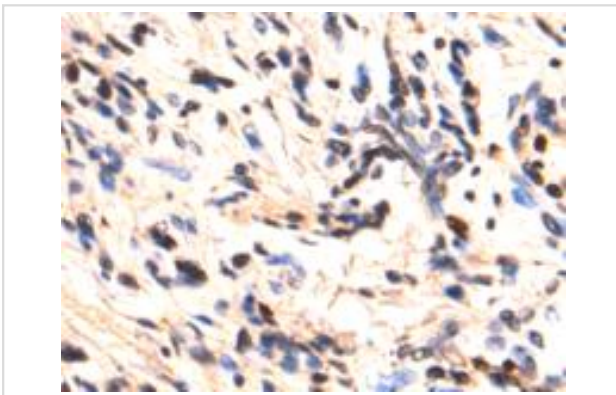
Application Details

Predicted MW: 35 kDa

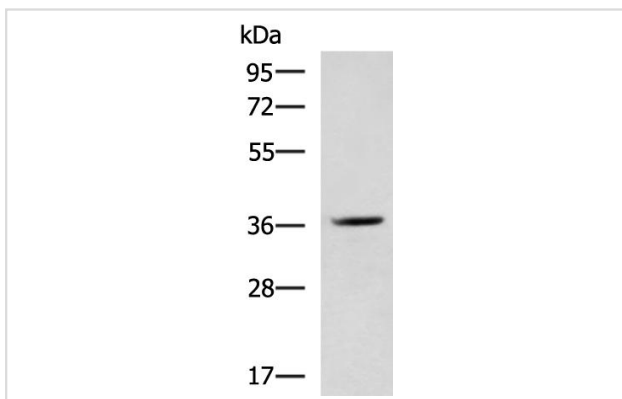
Western blotting: 1:200-1:1000

Immunohistochemistry: 1:50-1:200

Images



The image is immunohistochemistry of paraffin-embedded Human esophagus cancer tissue using MYOD1 Antibody at dilution 1/85. (Original magnification: \times 200)



Gel: 8%SDS-PAGE
Lysate: 40 μ g
Lane: Mouse brain tissue lysate
Primary antibody: MYOD1 Antibody at dilution 1/400
Secondary antibody: Goat anti rabbit IgG at 1/5000 dilution
Exposure time: 2 minutes

Background

This gene encodes a nuclear protein that belongs to the basic helix-loop-helix family of transcription factors and the myogenic factors subfamily. It regulates muscle cell differentiation by inducing cell cycle arrest, a prerequisite for myogenic initiation. The protein is also involved in muscle regeneration. It activates its own transcription which may stabilize commitment to myogenesis.

Note: This product is for in vitro research use only and is not intended for use in humans or animals.