

## FZD2 Antibody

Catalog No: #37068



Package Size: #37068-1 50ul #37068-2 100ul

Orders: [order@signalwayantibody.com](mailto:order@signalwayantibody.com)Support: [tech@signalwayantibody.com](mailto:tech@signalwayantibody.com)

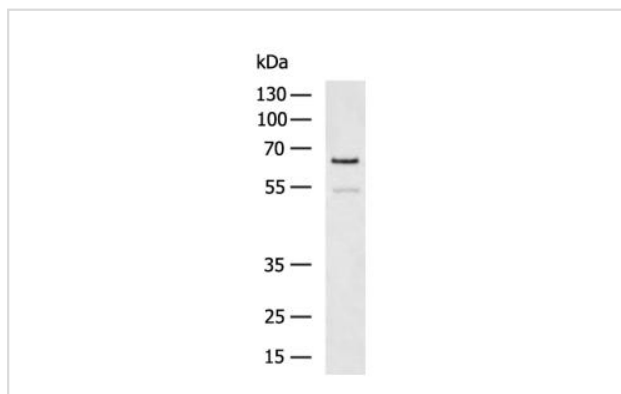
## Description

Product Name	FZD2 Antibody
Host Species	Rabbit
Clonality	Polyclonal
Purification	Antigen affinity purification.
Applications	WB,IHC,ELISA
Species Reactivity	Hu Ms Rt
Specificity	The antibody detects endogenous levels of total FZD2 protein.
Immunogen Type	Peptide
Immunogen Description	Synthetic peptide corresponding to a region derived from internal residues of human Frizzled family receptor 2
Target Name	FZD2
Other Names	Fz2; fz-2; fzE2; hFz2
Accession No.	Swiss-Prot#: Q14332NCBI Gene ID: 2535Gene Accssion: NP_001457
SDS-PAGE MW	64kd
Concentration	1.1mg/ml
Formulation	Rabbit IgG in pH7.3 PBS, 0.05% NaN <sub>3</sub> , 50% Glycerol.
Storage	Store at -20°C

## Application Details

WB $\circ$ O 1 $\circ$ O 1000- 1 $\circ$ O 5000IHC $\circ$ O 1 $\circ$ O 50- 1 $\circ$ O 200ELISA $\circ$ O 1 $\circ$ O 5000- 1 $\circ$ O 10000

## Images



Gel: 8%SDS-PAGE  
 Lysate: 40 ug  
 Lane: HT-29 cell lysate  
 Primary antibody: (FZD2 Antibody) at dilution 1/1200  
 Secondary antibody: (HRP-conjugated Goat anti rabbit IgG) at 1/5000 dilution  
 Exposure time: 2 minutes

## Background

This intronless gene is a member of the frizzled gene family. Members of this family encode seven-transmembrane domain proteins that are receptors

for the wingless type MMTV integration site family of signaling proteins. This gene encodes a protein that is coupled to the beta-catenin canonical signaling pathway. Competition between the wingless-type MMTV integration site family, member 3A and wingless-type MMTV integration site family, member 5A gene products for binding of this protein is thought to regulate the beta-catenin-dependent and -independent pathways.

---

Note: This product is for in vitro research use only and is not intended for use in humans or animals.