

GDF2 Antibody

Catalog No: #37122

Package Size: #37122-1 50ul #37122-2 100ul

Orders: order@signalwayantibody.comSupport: tech@signalwayantibody.com

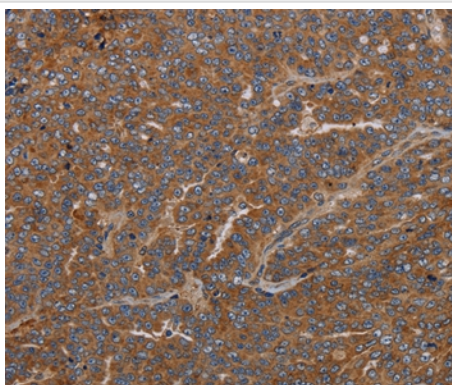
Description

Product Name	GDF2 Antibody
Host Species	Rabbit
Clonality	Polyclonal
Purification	Antigen affinity purification.
Applications	IHC
Species Reactivity	Hu Ms
Specificity	The antibody detects endogenous levels of total GDF2 protein.
Immunogen Type	Peptide
Immunogen Description	Synthetic peptide corresponding to residues near the C terminal of human growth differentiation factor 2
Target Name	GDF2
Other Names	BMP9; HHT5; BMP-9
Accession No.	Swiss-Prot#: Q9UK05NCBI Gene ID: 2658Gene Accssion: NP_057288
Concentration	0.3mg/ml
Formulation	Rabbit IgG in pH7.3 PBS, 0.05% NaN ₃ , 50% Glycerol.
Storage	Store at -20°C

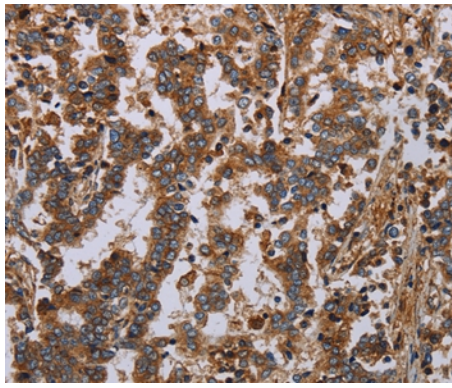
Application Details

Immunohistochemistry: 1:50-1:200

Images



Immunohistochemical analysis of paraffin-embedded Human ovarian cancer tissue using #37122 at dilution 1/40.



Immunohistochemical analysis of paraffin-embedded Human liver cancer tissue using #37122 at dilution 1/40.

Background

The protein encoded by this gene is a member of the bone morphogenetic protein (BMP) family and the TGF-beta superfamily. This group of proteins is characterized by a polybasic proteolytic processing site which is cleaved to produce a mature protein containing seven conserved cysteine residues. The members of this family are regulators of cell growth and differentiation in both embryonic and adult tissues. Studies in rodents suggest that this protein plays a role in the adult liver and in differentiation of cholinergic central nervous system neurons. Mutations in this gene are associated with hereditary hemorrhagic telangiectasia.

Note: This product is for in vitro research use only and is not intended for use in humans or animals.