

SMURF1 Antibody

Catalog No: #37123



Package Size: #37123-1 50ul #37123-2 100ul

Orders: order@signalwayantibody.comSupport: tech@signalwayantibody.com

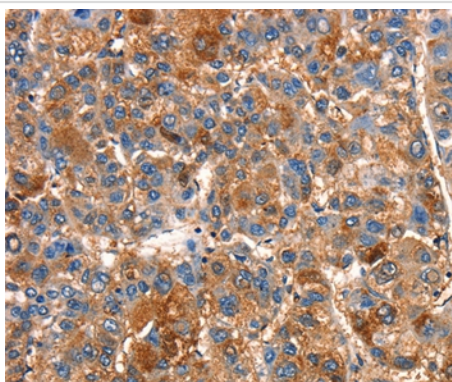
Description

Product Name	SMURF1 Antibody
Host Species	Rabbit
Clonality	Polyclonal
Purification	Antigen affinity purification.
Applications	IHC
Species Reactivity	Hu
Specificity	The antibody detects endogenous levels of total SMURF1 protein.
Immunogen Type	Peptide
Immunogen Description	Synthetic peptide corresponding to a region derived from internal residues of human SMAD specific E3 ubiquitin protein ligase 1
Target Name	SMURF1
Other Names	hSMURF1; KIAA1625; SMUF1
Accession No.	Swiss-Prot#: Q9HCE7NCBI Gene ID: 57154Gene Accssion: NP_065162
Concentration	1.8mg/ml
Formulation	Rabbit IgG in pH7.3 PBS, 0.05% NaN ₃ , 50% Glycerol.
Storage	Store at -20°C

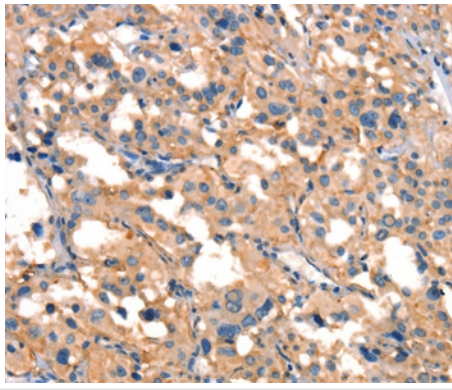
Application Details

Immunohistochemistry: 1:25-1:100

Images



Immunohistochemical analysis of paraffin-embedded Human liver cancer tissue using #37123 at dilution 1/15.



Immunohistochemical analysis of paraffin-embedded Human gastric cancer tissue using #37123 at dilution 1/15.

Background

This gene encodes a ubiquitin ligase that is specific for receptor-regulated SMAD proteins in the bone morphogenetic protein (BMP) pathway. This protein plays a key role in the regulation of cell motility, cell signalling, and cell polarity. Alternative splicing results in multiple transcript variants encoding different isoforms.

Published Papers

et al., Everolimus Alleviates Renal Allograft Interstitial Fibrosis by Inhibiting Epithelial-to-Mesenchymal Transition Not Only via Inducing Autophagy but Also via Stabilizing I κ B- α . In *Front Immunol.* 2022 Jan 24 by Zeping Gui , Chuanjian Suo, et al. PMID: 35140705, (2022)

[PMID:35140705](#)

Note: This product is for in vitro research use only and is not intended for use in humans or animals.