

THBS1 Antibody

Catalog No: #37384



Package Size: #37384-1 50ul #37384-2 100ul

Orders: order@signalwayantibody.comSupport: tech@signalwayantibody.com

Description

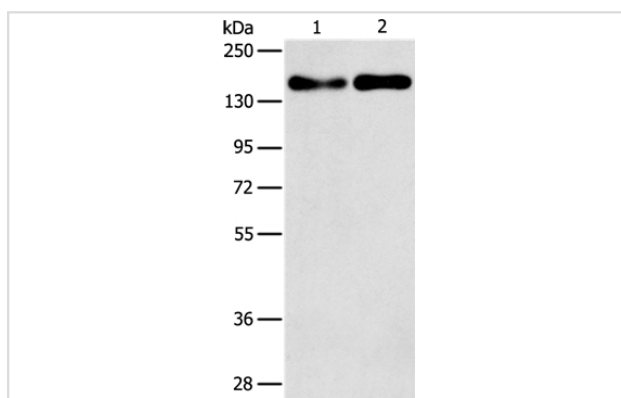
Product Name	THBS1 Antibody
Host Species	Rabbit
Clonality	Polyclonal
Purification	Antigen affinity purification.
Applications	WB IHC
Species Reactivity	Hu
Specificity	The antibody detects endogenous levels of total THBS1 protein.
Immunogen Type	Peptide
Immunogen Description	Synthetic peptide corresponding to a region derived from internal residues of human thrombospondin 1
Target Name	THBS1
Other Names	TSP; THBS; TSP1; TSP-1; THBS-1
Accession No.	Swiss-Prot#: P07996NCBI Gene ID: 7057Gene Accssion: NP_003237
SDS-PAGE MW	129kd
Concentration	1.9mg/ml
Formulation	Rabbit IgG in pH7.3 PBS, 0.05% NaN ₃ , 50% Glycerol.
Storage	Store at -20°C

Application Details

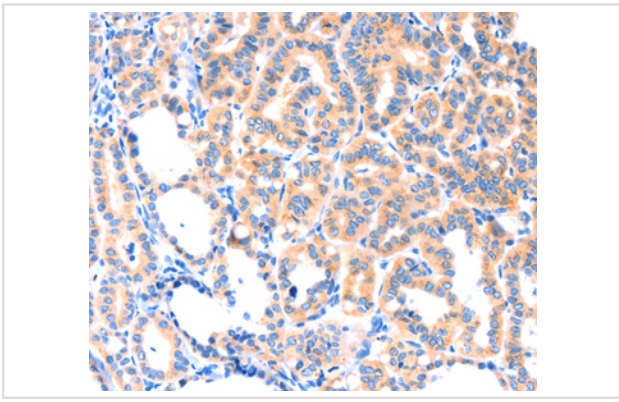
Western blotting: 1:200-1:1000

Immunohistochemistry: 1:50-1:200

Images



Gel: 8%SDS-PAGE
 Lysates (from left to right): A431 and Huvec cell
 Amount of lysate: 40ug per lane
 Primary antibody: 1/250 dilution
 Secondary antibody dilution: 1/8000
 Exposure time: 5 minutes



Immunohistochemical analysis of paraffin-embedded Human thyroid cancer tissue using #37384 at dilution 1/50.

Background

The protein encoded by this gene is a subunit of a disulfide-linked homotrimeric protein. This protein is an adhesive glycoprotein that mediates cell-to-cell and cell-to-matrix interactions. This protein can bind to fibrinogen, fibronectin, laminin, type V collagen and integrins alpha-V/beta-1. This protein has been shown to play roles in platelet aggregation, angiogenesis, and tumorigenesis.

Published Papers

el at., Differential expression of pro-and anti-angiogenic factors in the endometrium between repeat breeder and normally fertile cowsInAnim Reprod SciOn2023 JulbyKen-Go Hayashi?1,?Ryosuke Sakumoto et al..PMID:?37270879, , (2023)

[PMID:37270879](#)

Note: This product is for in vitro research use only and is not intended for use in humans or animals.