

## CAMTA1 Antibody

Catalog No: #37458



Package Size: #37458-1 50ul #37458-2 100ul

Orders: [order@signalwayantibody.com](mailto:order@signalwayantibody.com)Support: [tech@signalwayantibody.com](mailto:tech@signalwayantibody.com)

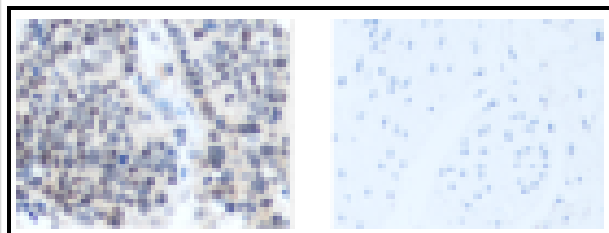
## Description

Product Name	CAMTA1 Antibody
Host Species	Rabbit
Clonality	Polyclonal
Purification	Antigen affinity purification.
Applications	IHC,ELISA
Species Reactivity	Hu Ms
Specificity	The antibody detects endogenous levels of CAMTA1 protein.
Immunogen Type	Peptide
Immunogen Description	Synthetic peptide of human CAMTA1
Target Name	CAMTA1
Other Names	CANPMR
Accession No.	Swiss-Prot#: Q9Y6Y1NCBI Gene ID: 23261Gene Accssion: NP_056030
Concentration	1.2mg/ml
Formulation	Rabbit IgG in pH7.3 PBS, 0.05% NaN <sub>3</sub> , 50% Glycerol.
Storage	Store at -20°C

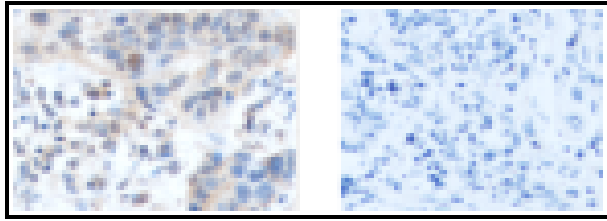
## Application Details

IHC 1:50-1:200

## Images



The image on the left is immunohistochemistry of paraffin-embedded Human bladder cancer tissue at dilution 1/50, on the right is treated with synthetic peptide. (Original magnification: 200)



The image on the left is immunohistochemistry of paraffin-embedded Human lung cancer tissue at dilution 1/50, on the right is treated with synthetic peptide. (Original magnification: 200)

## Background

Calmodulin-binding transcription activator 1 is a protein that in humans is encoded by the CAMTA1 gene. Normally expressed in non-neoplastic adult central nervous system tissues: detected in whole brain, cerebellum, brain cortex, occipital lobe, frontal lobe, temporal lobe, putamen. Expression levels are low in oligodendroglial tumors, and are reduced by half in oligodendroglioma and astrocytoma cases with 1p loss of heterozygosity. Detected in neuroblastic-type cultured neuroblastoma cells.

Note: This product is for in vitro research use only and is not intended for use in humans or animals.