

CD24 Antibody

Catalog No: #37467

Package Size: #37467-1 50ul #37467-2 100ul

Orders: order@signalwayantibody.comSupport: tech@signalwayantibody.com

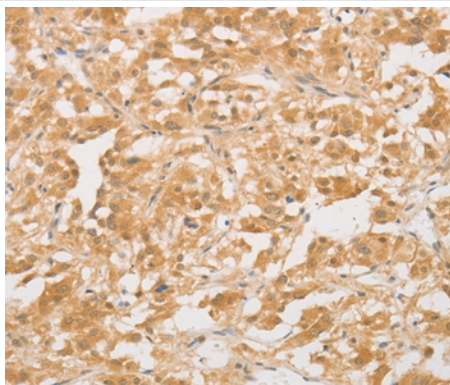
Description

Product Name	CD24 Antibody
Host Species	Rabbit
Clonality	Polyclonal
Purification	Antigen affinity purification.
Applications	IHC,ELISA
Species Reactivity	Hu
Specificity	The antibody detects endogenous levels of total CD24 protein.
Immunogen Type	Peptide
Immunogen Description	Synthetic peptide corresponding to a region derived from internal residues of human CD24 molecule
Target Name	CD24
Other Names	CD24A
Accession No.	Swiss-Prot#: P25063NCBI Gene ID: 100133941Gene Accssion: NP_037362
Concentration	1.8mg/ml
Formulation	Rabbit IgG in pH7.3 PBS, 0.05% NaN ₃ , 50% Glycerol.
Storage	Store at -20°C

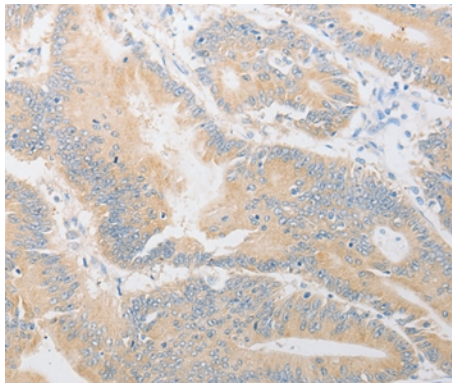
Application Details

Immunohistochemistry: 1:50-1:200

Images



Immunohistochemical analysis of paraffin-embedded Human thyroid cancer tissue using #37467 at dilution 1/40.



Immunohistochemical analysis of paraffin-embedded Human colon cancer tissue using #37467 at dilution 1/40.

Background

This gene encodes a sialoglycoprotein that is expressed on mature granulocytes and in many B cells. The encoded protein is anchored via a glycosyl phosphatidylinositol (GPI) link to the cell surface. Modulates B-cell activation responses. Signaling could be triggered by the binding of a lectin-like ligand to the CD24 carbohydrates, and transduced by the release of second messengers derived from the GPI-anchor. Promotes AG-dependent proliferation of B-cells, and prevents their terminal differentiation into antibody-forming cells.

Note: This product is for in vitro research use only and is not intended for use in humans or animals.