

CHRDL2 Antibody

Catalog No: #37486



Package Size: #37486-1 50ul #37486-2 100ul

Orders: order@signalwayantibody.comSupport: tech@signalwayantibody.com

Description

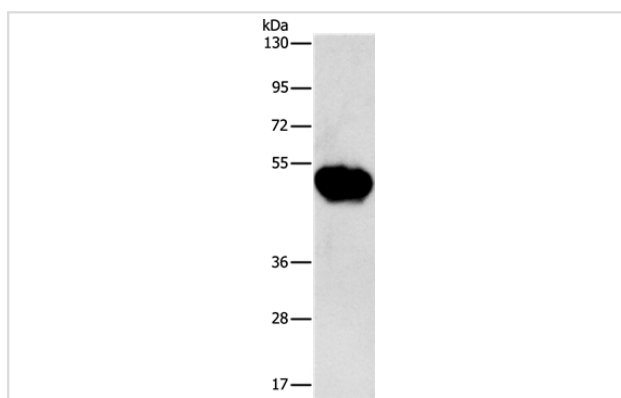
Product Name	CHRDL2 Antibody
Host Species	Rabbit
Clonality	Polyclonal
Purification	Antigen affinity purification.
Applications	IHC _o O ELISA
Species Reactivity	Hu
Specificity	The antibody detects endogenous levels of total CHRDL2 protein.
Immunogen Type	Peptide
Immunogen Description	Synthetic peptide corresponding to a region derived from internal residues of human chordin-like 2
Target Name	CHRDL2
Other Names	BNF1; CHL2; FKSG37
Accession No.	Swiss-Prot#: Q6WN34NCBI Gene ID: 25884Gene Accssion: NP_056239
SDS-PAGE MW	48kd
Concentration	1.2mg/ml
Formulation	Rabbit IgG in pH7.3 PBS, 0.05% NaN ₃ , 50% Glycerol.
Storage	Store at -20°C

Application Details

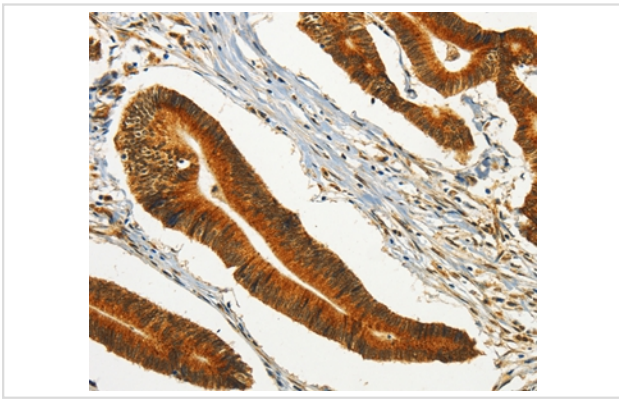
Western blotting: 1:500-1:2000

Immunohistochemistry: 1:25-1:100

Images



Gel: 8%SDS-PAGE
 Lysates (from left to right): Human fetal brain tissue
 Amount of lysate: 40ug per lane
 Primary antibody: 1/600 dilution
 Secondary antibody dilution: 1/8000
 Exposure time: 1 minute



Immunohistochemical analysis of paraffin-embedded Human colon cancer tissue using #37486 at dilution 1/30.

Background

CHRDL2 (chordin-related protein 2), also known as BNF1 (breast tumor novel factor 1) or CHL2 (chordin-like 2), is a 429 amino acid protein that belongs to the chordin family of proteins. CHRDL2 contains three VWFC (von Willebrand Factor type C) domains and is predominantly expressed in uterus and moderately expressed in prostate, liver, ovary, heart and testis. Due to alternative splicing events, CHRDL2 exists as five isoforms, namely isoform I, isoform II, isoform VII, isoform VIII and isoform IX. Two of these isoforms are secreted, while the other three localize to the cytoplasm. Functioning as a BMP-binding inhibitor, CHRDL2 directly interacts with BMPs and blocks their binding to BMP receptors, thereby inhibiting BMP activity. In breast, lung and colon tumors, CHRDL2 expression is upregulated, suggesting a possible role in tumorigenesis.

Note: This product is for in vitro research use only and is not intended for use in humans or animals.