

## COL7A1 Antibody

Catalog No: #37510



Package Size: #37510-1 50ul #37510-2 100ul

Orders: [order@signalwayantibody.com](mailto:order@signalwayantibody.com)Support: [tech@signalwayantibody.com](mailto:tech@signalwayantibody.com)

## Description

Product Name	COL7A1 Antibody
Host Species	Rabbit
Clonality	Polyclonal
Purification	Antigen affinity purification.
Applications	ELISA, WB, IHC
Species Reactivity	Hu
Specificity	The antibody detects endogenous levels of total COL7A1 protein.
Immunogen Type	Peptide
Immunogen Description	Synthetic peptide corresponding to residues near the C terminal of human collagen, type VII, alpha 1
Target Name	COL7A1
Other Names	EBD1; EBR1; EBDCT
Accession No.	Swiss-Prot#: Q02388NCBI Gene ID: 1294Gene Accssion: NP_000085
Concentration	1.2 mg/ml
Formulation	Rabbit IgG in pH7.3 PBS, 0.05% NaN <sub>3</sub> , 50% Glycerol.
Storage	Store at -20°C

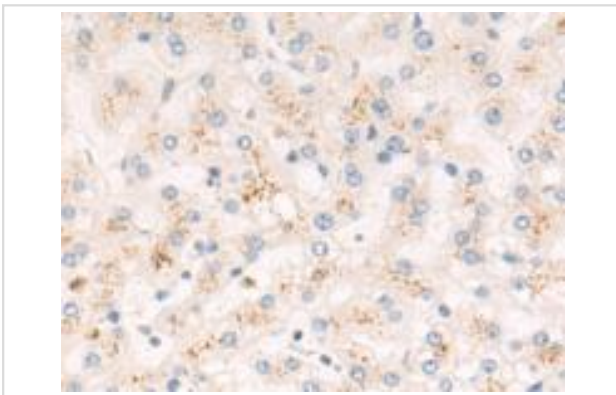
## Application Details

Predicted MW: 295 kDa

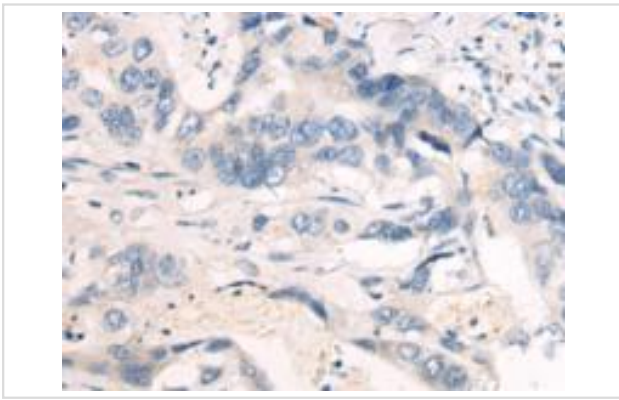
Western blotting: 1:500-1:2000

Immunohistochemistry: 1:50-1:100

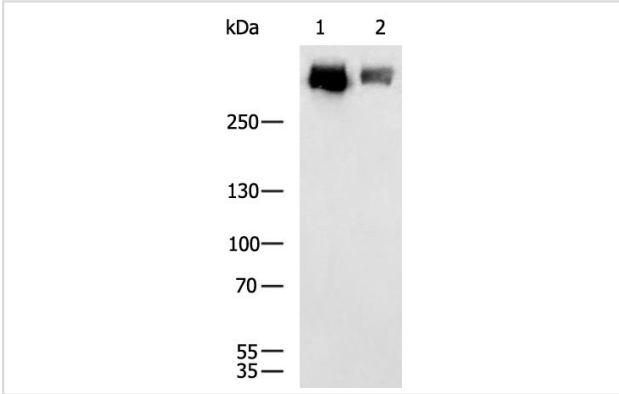
## Images



The image is immunohistochemistry of paraffin-embedded Human liver cancer tissue using COL7A1 Antibody at dilution 1/50. (Original magnification:  $\times$  200)



The image is immunohistochemistry of paraffin-embedded Human colorectal cancer tissue using COL7A1 Antibody at dilution 1/50. (Original magnification:  $\times$  200)



Gel: 6%SDS-PAGE Lysate: 40  $\mu$ g Lane 1-2: SKOV3, HeLa cell lysates Primary antibody: COL7A1 Antibody at dilution 1/600 Secondary antibody: Goat anti rabbit IgG at 1/5000 dilution Exposure time: 10 seconds

## Background

This gene encodes the alpha chain of type VII collagen. The type VII collagen fibril, composed of three identical alpha collagen chains, is restricted to the basement zone beneath stratified squamous epithelia. It functions as an anchoring fibril between the external epithelia and the underlying stroma. Mutations in this gene are associated with all forms of dystrophic epidermolysis bullosa. In the absence of mutations, however, an acquired form of this disease can result from an autoimmune response made to type VII collagen.

Note: This product is for in vitro research use only and is not intended for use in humans or animals.