

ICAM3 Antibody

Catalog No: #37638



Package Size: #37638-1 50ul #37638-2 100ul

Orders: order@signalwayantibody.comSupport: tech@signalwayantibody.com

Description

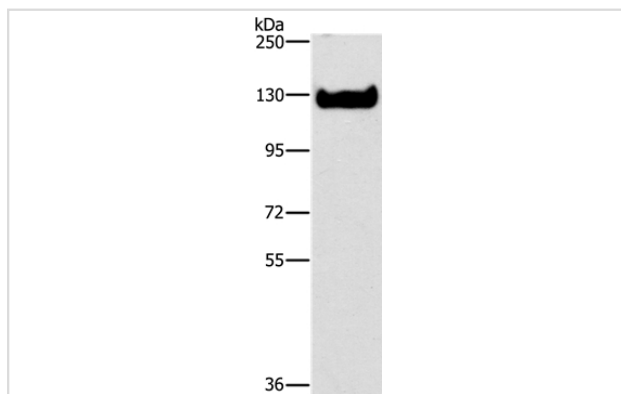
Product Name	ICAM3 Antibody
Host Species	Rabbit
Clonality	Polyclonal
Purification	Antigen affinity purification.
Applications	WB IHC
Species Reactivity	Hu
Specificity	The antibody detects endogenous levels of total ICAM3 protein.
Immunogen Type	Peptide
Immunogen Description	Synthetic peptide corresponding to a region derived from internal residues of human intercellular adhesion molecule 3
Target Name	ICAM3
Other Names	CD50; CDW50; ICAM-R
Accession No.	Swiss-Prot#: P32942NCBI Gene ID: 3385Gene Accssion: NP_002153/P32942
SDS-PAGE MW	60kd
Concentration	1.4mg/ml
Formulation	Rabbit IgG in pH7.3 PBS, 0.05% NaN ₃ , 50% Glycerol.
Storage	Store at -20°C

Application Details

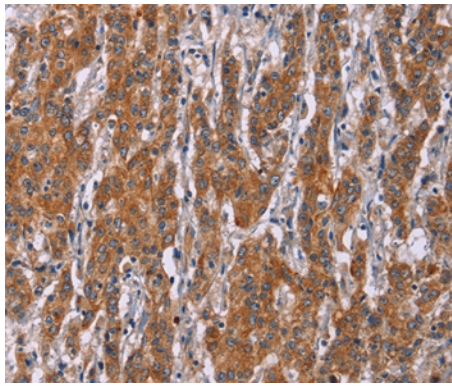
Western blotting: 1:500-1:2000

Immunohistochemistry: 1:25-1:100

Images



Gel: 6%SDS-PAGE
 Lysate: 40ug Jurkat cell
 Primary antibody: 1/348 dilution
 Secondary antibody dilution: 1/8000
 Exposure time: 1 minute



Immunohistochemical analysis of paraffin-embedded Human gastric cancer tissue using #37638 at dilution 1/20.

Background

The protein encoded by this gene is a member of the intercellular adhesion molecule (ICAM) family. All ICAM proteins are type I transmembrane glycoproteins, contain 2-9 immunoglobulin-like C2-type domains, and bind to the leukocyte adhesion LFA-1 protein. This protein is constitutively and abundantly expressed by all leucocytes and may be the most important ligand for LFA-1 in the initiation of the immune response. It functions not only as an adhesion molecule, but also as a potent signalling molecule.

Published Papers

el at., Identification of lactate metabolism-related genes for glioma metabolic reprogramming, , (2022)

PMID:

Note: This product is for in vitro research use only and is not intended for use in humans or animals.