

JAG2 Antibody

Catalog No: #37669

Package Size: #37669-1 50ul #37669-2 100ul

Orders: order@signalwayantibody.comSupport: tech@signalwayantibody.com

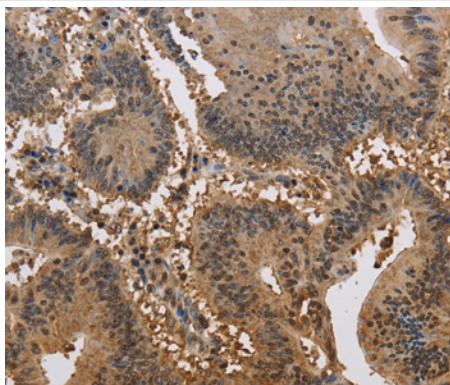
Description

Product Name	JAG2 Antibody
Host Species	Rabbit
Clonality	Polyclonal
Purification	Antigen affinity purification.
Applications	IHC
Species Reactivity	Hu
Specificity	The antibody detects endogenous levels of total JAG2 protein.
Immunogen Type	Peptide
Immunogen Description	Synthetic peptide corresponding to residues near the C terminal of human jagged 2
Target Name	JAG2
Other Names	HJ2; SER2
Accession No.	Swiss-Prot#: Q9Y219NCBI Gene ID: 3714Gene Accssion: NP_002217
Concentration	2mg/ml
Formulation	Rabbit IgG in pH7.3 PBS, 0.05% NaN ₃ , 50% Glycerol.
Storage	Store at -20°C

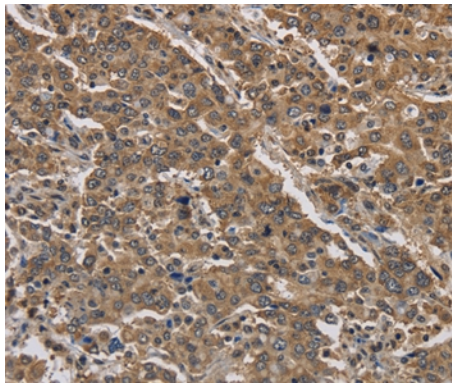
Application Details

Immunohistochemistry: 1:50-1:200

Images



Immunohistochemical analysis of paraffin-embedded Human colon cancer tissue using #37669 at dilution 1/30.



Immunohistochemical analysis of paraffin-embedded Human liver cancer tissue using #37669 at dilution 1/30.

Background

The Notch signaling pathway is an intercellular signaling mechanism that is essential for proper embryonic development. Members of the Notch gene family encode transmembrane receptors that are critical for various cell fate decisions. The protein encoded by this gene is one of several ligands that activate Notch and related receptors. Two transcript variants encoding different isoforms have been found for this gene.

Note: This product is for in vitro research use only and is not intended for use in humans or animals.