

PIM3 Antibody

Catalog No: #37701



Package Size: #37701-1 50ul #37701-2 100ul

Orders: order@signalwayantibody.comSupport: tech@signalwayantibody.com

Description

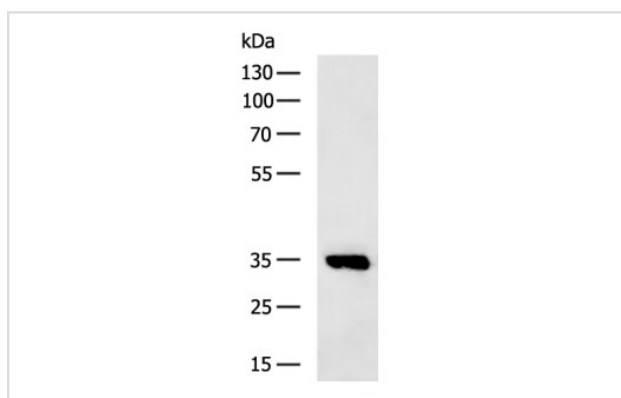
Product Name	PIM3 Antibody
Host Species	Rabbit
Clonality	Polyclonal
Purification	Antigen affinity purification.
Applications	WB,IHC,ELISA
Species Reactivity	Hu Ms Rt
Specificity	The antibody detects endogenous levels of total PIM3 protein.
Immunogen Type	Peptide
Immunogen Description	Synthetic peptide corresponding to residues near the C terminal of human pim-3 oncogene
Target Name	PIM3
Other Names	pim-3
Accession No.	Swiss-Prot#: Q86V86NCBI Gene ID: 415116Gene Accssion: NP_001001852
SDS-PAGE MW	36kd
Concentration	1.2 mg/ml
Formulation	Rabbit IgG in pH7.3 PBS, 0.05% NaN ₃ , 50% Glycerol.
Storage	Store at -20°C

Application Details

Western blotting: 1:1000-1:5000

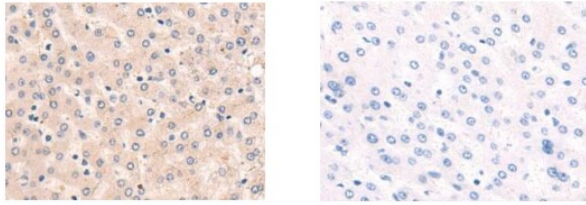
Immunohistochemistry: 1:50-1:200

Images



Gel: 8%SDS-PAGE Lysate: 40 μ g Lane: Mouse brain tissue lysate
 Primary antibody: 37701(PIM3 Antibody) at dilution 1/1350
 Secondary antibody: HRP-conjugated Goat anti rabbit IgG at 1/5000 dilution
 Exposure time: 5 seconds

The image on the left is immunohistochemistry of paraffin-embedded Human liver cancer tissue using 37701 (PIM3 Antibody) at dilution 1/50, on the right is treated with synthetic peptide. (Original magnification: $\times 200$)



Background

The protein encoded by this gene belongs to the Ser/Thr protein kinase family, and PIM subfamily. This gene is overexpressed in hematological and epithelial tumors and is associated with MYC coexpression. It plays a role in the regulation of signal transduction cascades, contributing to both cell proliferation and survival, and provides a selective advantage in tumorigenesis.

Note: This product is for in vitro research use only and is not intended for use in humans or animals.