

MAGEC1 Antibody

Catalog No: #37709



Package Size: #37709-1 50ul #37709-2 100ul

Orders: order@signalwayantibody.comSupport: tech@signalwayantibody.com

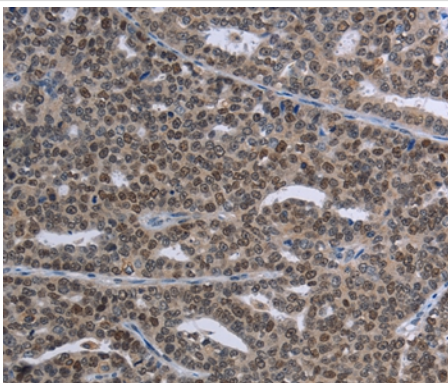
Description

Product Name	MAGEC1 Antibody
Host Species	Rabbit
Clonality	Polyclonal
Purification	Antigen affinity purification.
Applications	IHC
Species Reactivity	Hu
Specificity	The antibody detects endogenous levels of total MAGEC1 protein.
Immunogen Type	Peptide
Immunogen Description	Synthetic peptide corresponding to a region derived from internal residues of human melanoma antigen family C, 1
Target Name	MAGEC1
Other Names	CT7; CT7.1
Accession No.	Swiss-Prot#: O60732NCBI Gene ID: 9947Gene Accssion: NP_005453
Concentration	1.9mg/ml
Formulation	Rabbit IgG in pH7.3 PBS, 0.05% NaN ₃ , 50% Glycerol.
Storage	Store at -20°C

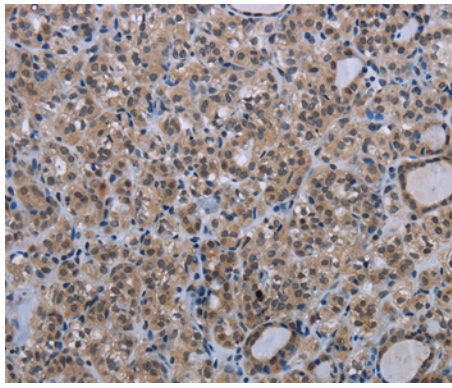
Application Details

Immunohistochemistry: 1:50-1:200

Images



Immunohistochemical analysis of paraffin-embedded Human ovarian cancer tissue using #37709 at dilution 1/30.



Immunohistochemical analysis of paraffin-embedded Human thyroid cancer tissue using #37709 at dilution 1/30.

Background

This gene is a member of the melanoma antigen gene (MAGE) family. The proteins of this family are tumor-specific antigens that can be recognized by autologous cytolytic T lymphocytes. This protein contains a large number of unique short repetitive sequences in front of the MAGE-homologous sequence, and therefore is about 800 aa longer than the other MAGE proteins.

Published Papers

el at., Establishment of cancer/testis antigen profiling based on clinicopathological characteristics in resected pathological stage III non-small cell lung cancer. In *Cancer Manag Res*. On 2018 Jul 16 by Jin S, Cao S et al.. PMID: 30038519, , (2018)

[PMID:30038519](#)

Note: This product is for in vitro research use only and is not intended for use in humans or animals.