

## SMC1B antibody

Catalog No: #22261



Orders: order@signalwayantibody.com

Support: tech@signalwayantibody.com

## Description

Product Name	SMC1B antibody
Host Species	Rabbit
Clonality	Polyclonal
Purification	Purified by antigen-affinity chromatography.
Applications	WB IHC IF
Species Reactivity	Hu
Immunogen Type	Recombinant protein
Immunogen Description	Recombinant protein fragment contain a sequence corresponding to a region within amino acids 154 and 403 of Human SMC1B
Target Name	SMC1B
Accession No.	NCBI Gene ID: 27127NCBI mRNA#: NM_148674NCBI Protein#: NP_683515
Concentration	1mg/ml
Formulation	Supplied in 0.1M Tris-buffered saline with 10% Glycerol (pH7.0). 0.01% Thimerosal was added as a preservative.
Storage	Store at -20°C for long term preservation (recommended). Store at 4°C for short term use.

## Application Details

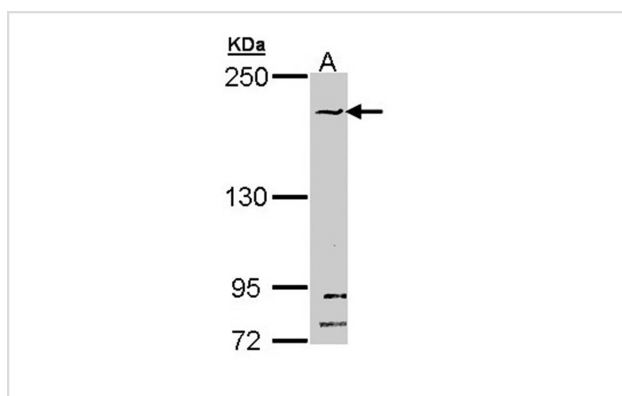
Predicted MW: 144kd

Western blotting: 1:500-1:3000

Immunohistochemistry: 1:50-1:500

Immunofluorescence: 1:100-1:200

## Images

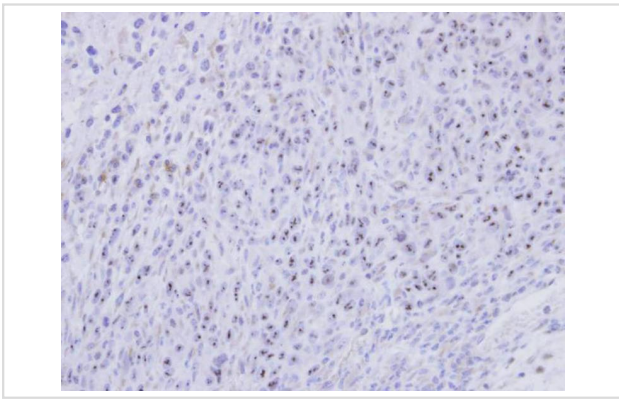


Sample (30 ug of whole cell lysate)

A: HeLa

5% SDS PAGE

Primary antibody diluted at 1: 1000



Immunohistochemical analysis of paraffin-embedded SAS xenograft, using SMC1B antibody at 1: 500 dilution.



Immunofluorescence analysis of paraformaldehyde-fixed A431, using SMC1B antibody at 1: 500 dilution.

## Background

SMC1L2 belongs to a family of proteins required for chromatid cohesion and DNA recombination during meiosis and mitosis (3:Revenkova et al., 2001 [PubMed 11564881]).[supplied by OMIM]

Note: This product is for in vitro research use only and is not intended for use in humans or animals.