

SASH1 Antibody

Catalog No: #37895



Package Size: #37895-1 50ul #37895-2 100ul

Orders: order@signalwayantibody.comSupport: tech@signalwayantibody.com

Description

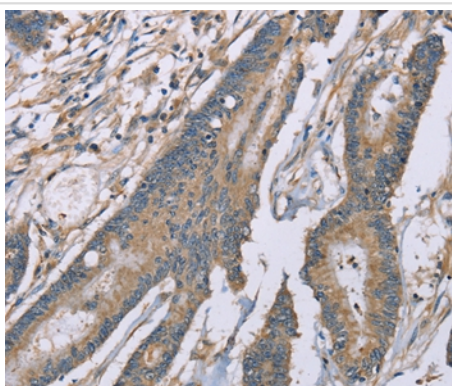
| | |
|-----------------------|---|
| Product Name | SASH1 Antibody |
| Host Species | Rabbit |
| Clonality | Polyclonal |
| Purification | Antigen affinity purification. |
| Applications | IHC WB |
| Species Reactivity | Hu Ms |
| Specificity | The antibody detects endogenous levels of total SASH1 protein. |
| Immunogen Type | Peptide |
| Immunogen Description | Synthetic peptide corresponding to a region derived from internal residues of human SAM and SH3 domain containing 1 |
| Target Name | SASH1 |
| Other Names | SH3D6A; dJ323M4; dJ323M4.1 |
| Accession No. | Swiss-Prot#: O94885NCBI Gene ID: 23328Gene Accssion: NP_056093/O94885 |
| Concentration | 1.4mg/ml |
| Formulation | Rabbit IgG in pH7.3 PBS, 0.05% NaN ₃ , 50% Glycerol. |
| Storage | Store at -20°C |

Application Details

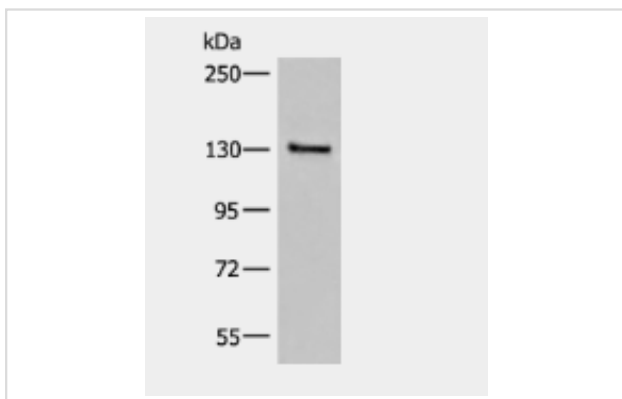
Immunohistochemistry: 1:25-1:100

WB: 1:100-1:2000

Images



Immunohistochemical analysis of paraffin-embedded Human colorectal cancer tissue using #37895 at dilution 1/20.



Western blot analysis of extracts from Human urinary bladder tissue lysate, using SASH1 Antibody

Background

SASH1 (SAM and SH3 domain-containing protein 1), also known as PEPE1 (Proline-glutamate repeat-containing protein), is a 1247 amino acid protein that is significantly downregulated in the majority of primary breast tumor tissues, breast cancer cell lines, lung and thyroid tumors, as well as in certain colon carcinomas. It has been hypothesized that its expression is suppressed not due to mutation of the SASH1 gene, but instead via other mechanisms, such as promoter methylation.

Note: This product is for in vitro research use only and is not intended for use in humans or animals.