

## Aspartyl aminopeptidase antibody

Catalog No: #22266

Orders: order@signalwayantibody.com

Support: tech@signalwayantibody.com

## Description

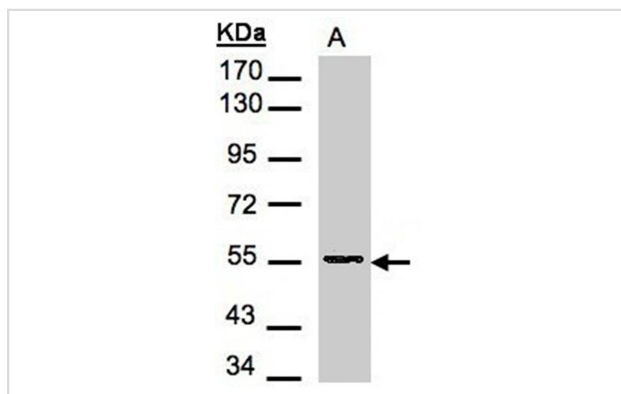
Product Name	Aspartyl aminopeptidase antibody
Host Species	Rabbit
Clonality	Polyclonal
Purification	Purified by antigen-affinity chromatography.
Applications	WB
Species Reactivity	Hu
Immunogen Type	Recombinant protein
Immunogen Description	Recombinant protein fragment contain a sequence corresponding to a region within amino acids 1 and 205 of Human DNPEP
Target Name	Aspartyl aminopeptidase
Other Names	DAP; ASPEP
Accession No.	NCBI Gene ID: 23549NCBI mRNA#: NM_012100NCBI Protein#: NP_036232
Concentration	0.5mg/ml
Formulation	Supplied in 0.1M Tris-buffered saline with 10% Glycerol (pH7.0). 0.01% Thimerosal was added as a preservative.
Storage	Store at -20°C for long term preservation (recommended). Store at 4°C for short term use.

## Application Details

Predicted MW: 53kd

Western blotting: 1:500-1:3000

## Images



Sample(30 ug of whole cell lysate)

A: H1299

7.5% SDS PAGE

Primary antibody diluted at 1: 500

## Background

The protein encoded by this gene is an aminopeptidase which prefers acidic amino acids, and specifically favors aspartic acid over glutamic acid. It is thought to be a cytosolic protein involved in general metabolism of intracellular proteins. [provided by RefSeq]

---

Note: This product is for in vitro research use only and is not intended for use in humans or animals.