

## SEMA7A Antibody

Catalog No: #37908



Package Size: #37908-1 50ul #37908-2 100ul

Orders: order@signalwayantibody.com

Support: tech@signalwayantibody.com

## Description

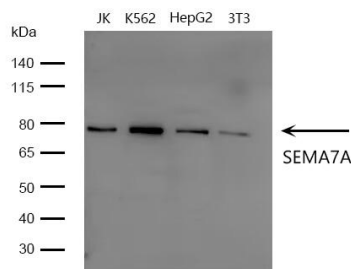
Product Name	SEMA7A Antibody
Host Species	Rabbit
Clonality	Polyclonal
Purification	The antibody was affinity-purified from rabbit antiserum by affinity-chromatography using epitope-specific immunogen.
Applications	WB IHC
Species Reactivity	Hu Ms
Specificity	The antibody detects endogenous levels of total SEMA7A protein.
Immunogen Type	Peptide
Immunogen Description	Synthetic peptide from human protein
Target Name	SEMA7A
Other Names	JMH; CD108; SEMAL; CDw108; SEMAK1; H-Sema-L; H-SEMA-K1
Accession No.	Swiss-Prot#: O75326NCBI Gene ID: 8482Gene Accssion: NP_001139501/O75326
SDS-PAGE MW	75kd
Concentration	1mg/ml
Formulation	Liquid in PBS containing 50% glycerol, 0.5% BSA and 0.02% sodium azide.
Storage	Store at -20°C

## Application Details

Western blotting: 1:500-1:2000

Immunohistochemistry: 1:50-1:200

## Images



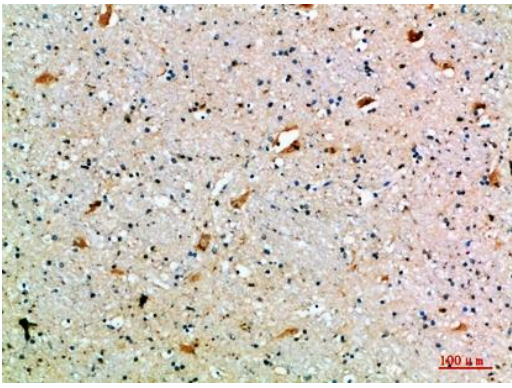
Western blot analysis of SEMA7A on different lysates at 1/500 dilution.

Lane 1: JK lysate

Lane 2: K-562 lysate

Lane 3: HepG2 lysate

Lane 4: 3T3 lysate



Immunohistochemical analysis of paraffin-embedded human-brain, antibody was diluted at 1:200

## Background

The protein encoded by this gene binds to cell surfaces through a glycosylphosphatidylinositol (GPI) linkage. The encoded glycoprotein is found on activated lymphocytes and erythrocytes. This protein may be involved in immunomodulatory and neuronal processes. Defects in this gene can result in loss of bone mineral density (BMD). Three transcript variants encoding different isoforms have been found for this gene.

Note: This product is for in vitro research use only and is not intended for use in humans or animals.