

IL-1F9 antibody

Catalog No: #22271



Orders: order@signalwayantibody.com

Support: tech@signalwayantibody.com

Description

Product Name	IL-1F9 antibody
Host Species	Rabbit
Clonality	Polyclonal
Purification	Purified by antigen-affinity chromatography.
Applications	WB IHC
Species Reactivity	Hu
Immunogen Type	Peptide
Immunogen Description	Synthetic peptide contain a sequence corresponding to a region within amino acids 105 and 169 of Human IL1F9
Target Name	IL-1F9
Accession No.	NCBI Gene ID: 56300NCBI mRNA#: NM_019618NCBI Protein#: NP_062564
Concentration	1mg/ml
Formulation	Supplied in 0.1M Tris-buffered saline with 10% Glycerol (pH7.0). 0.01% Thimerosal was added as a preservative.
Storage	Store at -20°C for long term preservation (recommended). Store at 4°C for short term use.

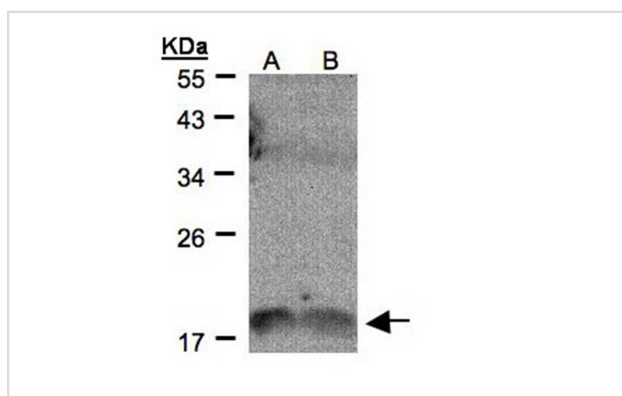
Application Details

Predicted MW: 19kd

Western blotting: 1:500-1:3000

Immunohistochemistry: 1:50-1:500

Images



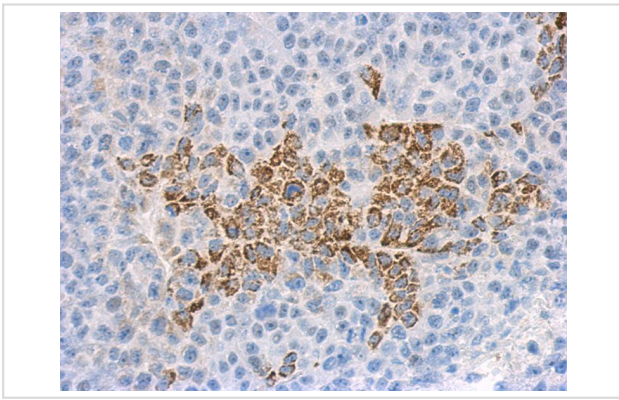
Sample(30 ug of whole cell lysate)

A: H1299

B: HeLa S3

12% SDS PAGE

Primary antibody diluted at 1: 500



Immunohistochemical analysis of paraffin-embedded hela xenograft, using IL1F9 antibody at 1: 500 dilution.

Background

The protein encoded by this gene is a member of the interleukin 1 cytokine family. The activity of this cytokine is mediated by interleukin 1 receptor-like 2 (IL1RL2/IL1R-rp2), and is specifically inhibited by interleukin 1 family, member 5 (IL1F5/IL-1 delta). Interferon-gamma, tumor necrosis factor-alpha and interleukin 1, beta (IL1B) are reported to stimulate the expression of this cytokine in keratinocytes. The expression of this cytokine in keratinocytes can also be induced by a contact hypersensitivity reaction or herpes simplex virus infection. This gene and eight other interleukin 1 family genes form a cytokine gene cluster on chromosome 2. [provided by RefSeq]

Note: This product is for in vitro research use only and is not intended for use in humans or animals.