

## Histone H1(Phospho-Ser1) Rabbit Polyclonal Antibody

Catalog No: #12096



Package Size: #12096-1 50ul #12096-2 100ul

Orders: order@signalwayantibody.com

Support: tech@signalwayantibody.com

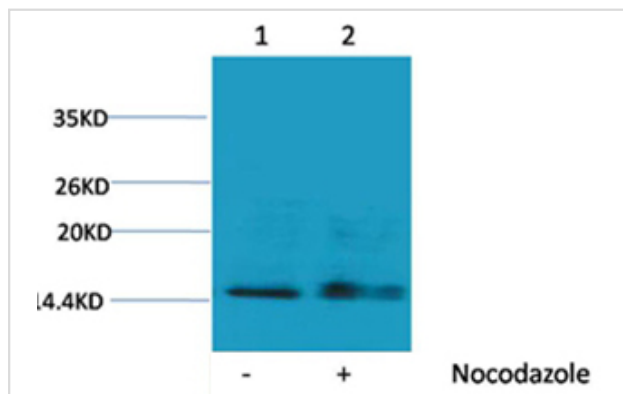
## Description

Product Name	Histone H1(Phospho-Ser1) Rabbit Polyclonal Antibody
Host Species	Rabbit
Clonality	Polyclonal
Purification	Antibodies were purified by affinity-chromatography using epitope-specific phosphopeptide. Non-phospho specific antibodies were removed by chromatography using non-phosphopeptide.
Applications	WB
Species Reactivity	Hu Rt Ms
Specificity	The Histone H1(Phospho Ser1) antibody can detects endogenous Histone H1(Phospho Ser1) protein.
Immunogen Type	peptide
Immunogen Description	Peptide sequence around phosphorylation site of serine 1(M-S(p)-E-T) derived from Human Histone H1.
Target Name	Histone H1(Phospho-Ser1)
Modification	Phospho
Other Names	H1 antibody; HIST1H1B antibody; Histone 1 antibody; Histone H1a antibody
Accession No.	Swiss-Prot#:P16403
SDS-PAGE MW	17-25kd
Concentration	1.0mg/ml
Formulation	Rabbit Antiserum, containing 0.02% sodium azide as Preservative and 50% Glycerol.
Storage	Store at -20°C

## Application Details

Western blotting: 1:1000~1:2000

## Images



Western blot analysis of extracts from HeLa cells, untreated (-) or treated with Nocodazole (1 µg/ml, 24 hr; +), using #12096 diluted at 1:1,000.

## Background

Histone H1 is one of the five main histone protein families which are components of chromatin in eukaryotic cells. May play a key role in the control of

gene expression during oogenesis and early embryogenesis, presumably through the perturbation of chromatin structure.

---

Note: This product is for in vitro research use only and is not intended for use in humans or animals.