

Histone H2A.X(Phospho-Tyr142) Rabbit Polyclonal Antibody

Catalog No: #12101

Orders: order@signalwayantibody.comSupport: tech@signalwayantibody.com

Package Size: #12101-1 50ul #12101-2 100ul

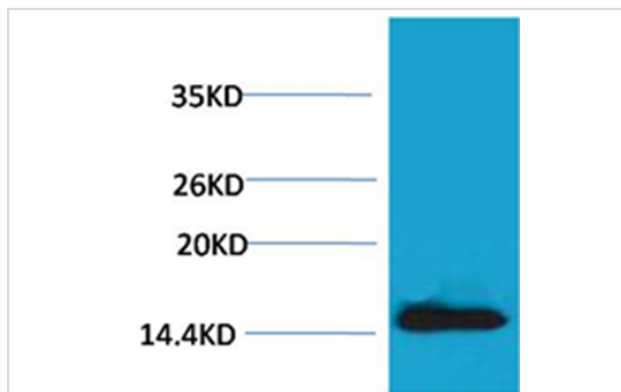
Description

| | |
|-----------------------|---|
| Product Name | Histone H2A.X(Phospho-Tyr142) Rabbit Polyclonal Antibody |
| Host Species | Rabbit |
| Clonality | Polyclonal |
| Purification | Antibodies were purified by affinity-chromatography using epitope-specific phosphopeptide. Non-phospho specific antibodies were removed by chromatography using non-phosphopeptide. |
| Applications | WB |
| Species Reactivity | Hu Rt Ms |
| Specificity | The Histone H2A.X(Phospho Tyr142) Rabbit Polyclonal Antibody detects endogenous Histone H2A.X(Phospho Tyr142) protein. |
| Immunogen Description | Peptide sequence around phosphorylation site of tyrosine 142(A-S-Q-E-Y(p)) derived from Human Histone H2A.X. |
| Target Name | Histone H2A.X(Phospho-Tyr142) |
| Modification | Phospho |
| Other Names | H2A histone family member X antibody; H2AFX antibody; H2AX Histone antibody; Histone H2AX antibody |
| Accession No. | Swiss-Prot#:P16104 |
| SDS-PAGE MW | 15kd |
| Concentration | 1.0mg/ml |
| Formulation | PBS, pH 7.4, containing 0.5%BSA, 0.02% sodium azide as Preservative and 50% Glycerol. |
| Storage | Store at -20°C |

Application Details

Western blotting: 1:1000~1:2000

Images



Western blot analysis of extracts from HeLa cells, using #12101 diluted at 1:2,000.

Background

Histone H2A which replaces conventional H2A in a subset of nucleosomes. Nucleosomes wrap and compact DNA into chromatin, limiting DNA accessibility to the cellular machineries which require DNA as a template.

Note: This product is for in vitro research use only and is not intended for use in humans or animals.