

# Histone H2B(Phospho-Ser14) Rabbit Polyclonal Antibody

Catalog No: #12102

Package Size: #12102-1 50ul #12102-2 100ul

Orders: [order@signalwayantibody.com](mailto:order@signalwayantibody.com)Support: [tech@signalwayantibody.com](mailto:tech@signalwayantibody.com)

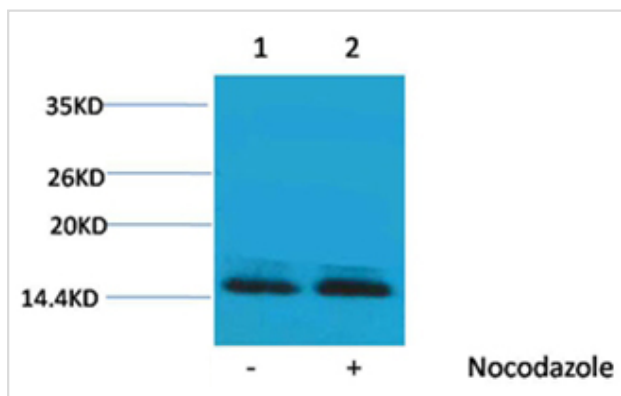
## Description

Product Name	Histone H2B(Phospho-Ser14) Rabbit Polyclonal Antibody
Host Species	Rabbit
Clonality	Polyclonal
Purification	Antibodies were purified by affinity-chromatography using epitope-specific phosphopeptide. Non-phospho specific antibodies were removed by chromatography using non-phosphopeptide.
Applications	WB
Species Reactivity	Hu Rt Ms
Specificity	The Histone H2B(Phospho Ser14) antibody can detects endogenous Histone H2B(Phospho Ser14) protein.
Immunogen Type	peptide
Immunogen Description	Peptide sequence around phosphorylation site of serine 14(K-G-S(p)-K-K) derived from Human Histone H2B.
Target Name	Histone H2B(Phospho-Ser14)
Modification	Phospho
Other Names	H2B GL105 antibody; H2B.1 antibody; Histone H2B type 1B antibody; HIST1H2BB antibody
Accession No.	Swiss-Prot#:P33778
SDS-PAGE MW	14kd
Concentration	1.0mg/ml
Formulation	Rabbit Antiserum, containing 0.02% sodium azide as Preservative and 50% Glycerol.
Storage	Store at -20°C

## Application Details

Western blotting: 1:1000~1:2000

## Images



Western blot analysis of extracts from HeLa cells, untreated (-) or treated with Nocodazole (1µg/ml, 24 hr; +), using #12102 diluted at 1:2,000.

## Background

---

Histone H2B is one of the 5 main histone proteins involved in the structure of chromatin in eukaryotic cells.

---

Note: This product is for in vitro research use only and is not intended for use in humans or animals.