

PPP1R2 (Phospho-Ser120/Ser121) Antibody

Catalog No: #12150

Package Size: #12150-1 50ul #12150-2 100ul

Orders: order@signalwayantibody.comSupport: tech@signalwayantibody.com

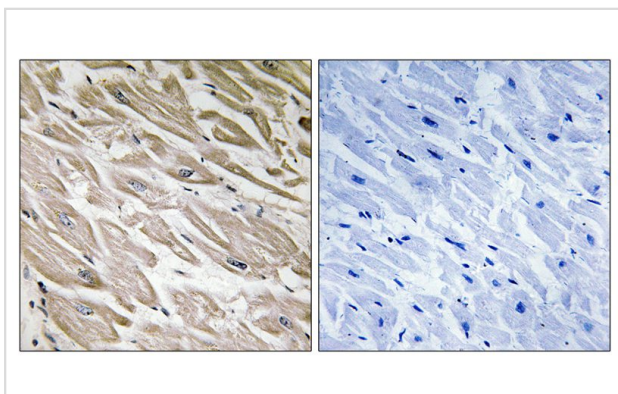
Description

Product Name	PPP1R2 (Phospho-Ser120/Ser121) Antibody
Host Species	Rabbit
Clonality	Polyclonal
Purification	Antibodies were produced by immunizing rabbits with synthetic phosphopeptide and KLH conjugates. Antibodies were purified by affinity-chromatography using epitope-specific phosphopeptide. Non-phospho specific antibodies were removed by chromatography using non-phosphopeptide.
Applications	IHC
Species Reactivity	Hu Ms Rt
Specificity	The antibody detects endogenous levels of PPP1R2 only when phosphorylated at serine 120 and serine 121.
Immunogen Type	peptide
Immunogen Description	Peptide sequence around phosphorylation site of serine 120 and serine 121 (Q-E-S(p)-S(p)-GE) derived from Human PPP1R2.
Target Name	PPP1R2
Modification	Phospho
Other Names	I-2; IPP-2; IPP2; Protein phosphatase inhibitor 2
Accession No.	Swiss-Prot#:P41236;NCBI Gene#:5504
Calculated MW	23kd
Concentration	1.0mg/ml
Formulation	Rabbit IgG in phosphate buffered saline (without Mg ²⁺ and Ca ²⁺), pH 7.4, 150mM NaCl, 0.02% sodium azide and 50% glycerol.
Storage	Store at -20°C

Application Details

Immunohistochemistry: 1:50~1:100

Images



Immunohistochemistry analysis of paraffin-embedded human heart tissue using PPP1R2 (Phospho-Ser120+Ser121) antibody #12150. The picture on the right is treated with the synthesized peptide.

Background

Inhibitor of protein-phosphatase 1.

Published Papers

el at., PTPS Facilitates Compartmentalized LTBP1 S-Nitrosylation and Promotes Tumor Growth under Hypoxia. In Mol Cell on 2020 Jan 2 by Qin Zhao, Ke Zheng, et al..PMID:31628042, , (2020)

[PMID:31628042](#)

Note: This product is for in vitro research use only and is not intended for use in humans or animals.